

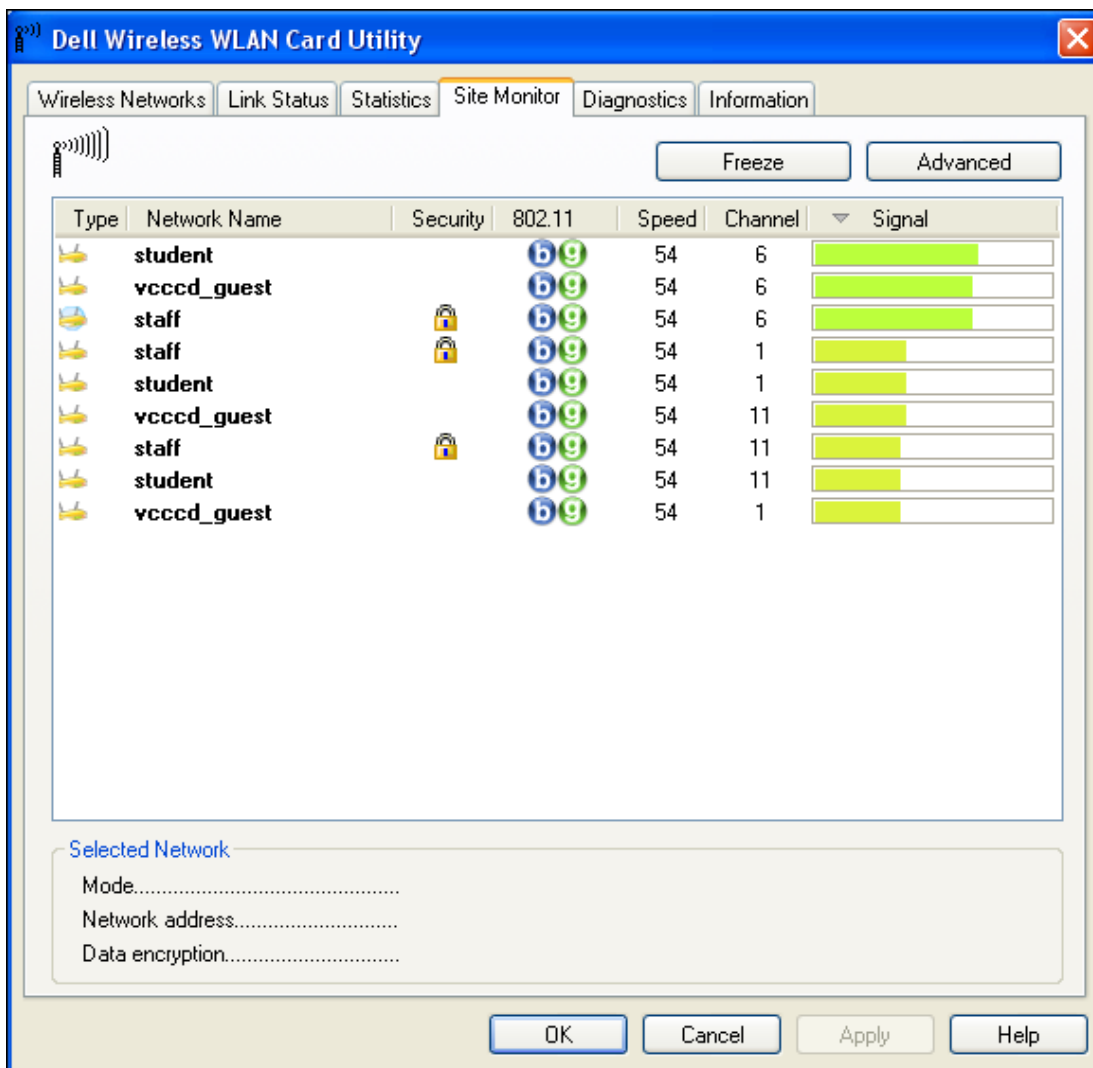
# VCCCD – “Staff” Wireless Setup (XP)

## Using Dell Wireless WLAN Utility for Users on AD



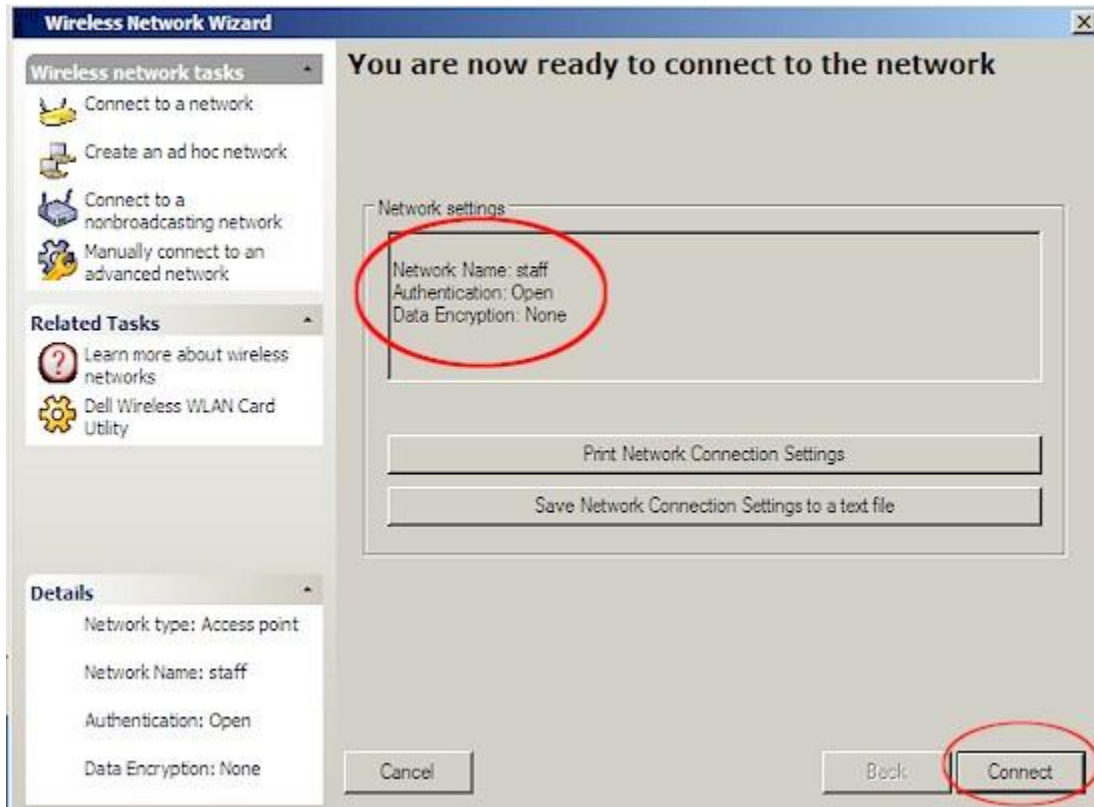
**Step 1:** Double-click on the Dell wireless utility icon located on the lower right hand corner of your desktop.

**Step 2:** Within the Dell Wireless WLAN Card Utility, select the “Site Monitor” tab. Within the tab double-click on the “staff” network. If more than one “staff” network exists like below, select the one on top. This means that there are multiple access points in the area and the top “staff” network has the strongest signal.



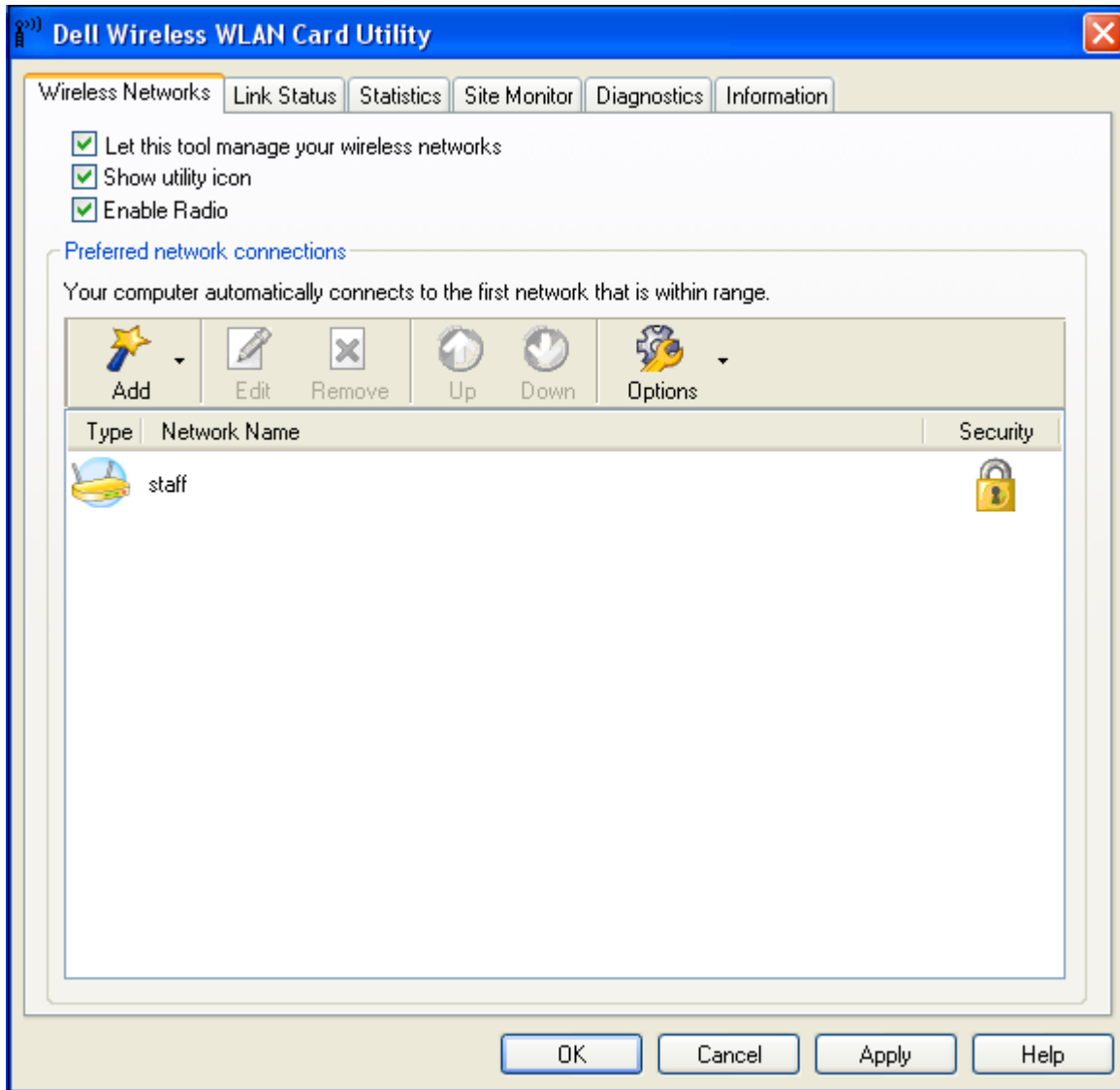
## VCCCD – “Staff” Wireless Setup (XP) Using Dell Wireless WLAN Utility for Users on AD

**Step 3:** In the box that is labeled Network Settings, verify that the network name is “staff”, then click on the “Connect” button on the lower right hand corner.



## VCCCD – “Staff” Wireless Setup (XP) Using Dell Wireless WLAN Utility for Users on AD

**Step 4:** Now click on the “Wireless Networks” tab in the upper left corner and then double click on the “staff” network.



## VCCCD – “Staff” Wireless Setup (XP) Using Dell Wireless WLAN Utility for Users on AD

**Step 5:** (Must be done in order) Change the Network Authentication type to WPA-Enterprise. Change the EAP method to PEAP and the Inner EAP method to MS-CHAP v2. On the User name/Password tab check the boxes “Use Windows user name and password” and “Include Windows domain”.

**Wireless Network Connection Settings**

Network name (SSID):

This is an ad hoc network      Channel:  ▾

Network authentication:  ▾

EAP method:  ▾      Inner EAP method:  ▾

Network Key     **User Name/Password**     Client Identity     Server Identity     Options

Prompt for user name and password

Use Windows user name and password

Include Windows domain

    Domain\User Name:

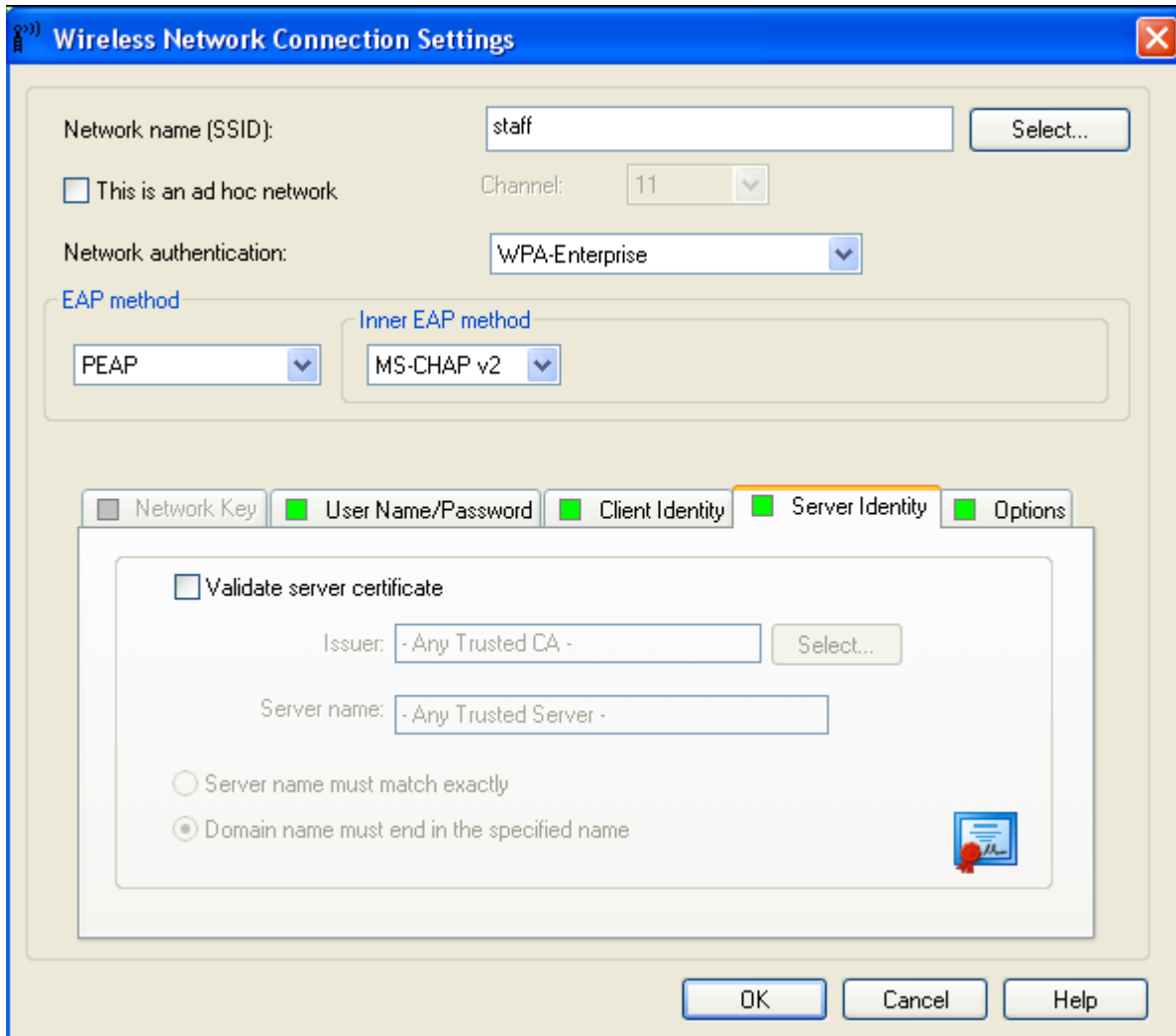
    Password:

    Confirm password:

Hide characters as I type

## VCCCD – “Staff” Wireless Setup (XP) Using Dell Wireless WLAN Utility for Users on AD

**Step 6:** Click on the Server Identity tab and make sure the box labeled “Validate server certificate” is unchecked then click on “OK”.



The screenshot shows the "Wireless Network Connection Settings" dialog box. The "Server Identity" tab is selected. The "Validate server certificate" checkbox is unchecked. The "Issuer" field is set to "- Any Trusted CA -" and the "Server name" field is set to "- Any Trusted Server -". The "Server name must match exactly" radio button is selected. The "Options" tab is also visible and selected.

Network name (SSID):

This is an ad hoc network Channel:

Network authentication:

EAP method

Inner EAP method

Network Key  User Name/Password  Client Identity  Server Identity  Options

Validate server certificate

Issuer:

Server name:

Server name must match exactly

Domain name must end in the specified name

You should now be able to receive an IP address and be able to get onto the “staff” wireless network. This procedure works for those people who have a Dell laptop and Dell wireless utility. The user must have an active directory account and the user’s laptop must be joined to the domain for this to work.