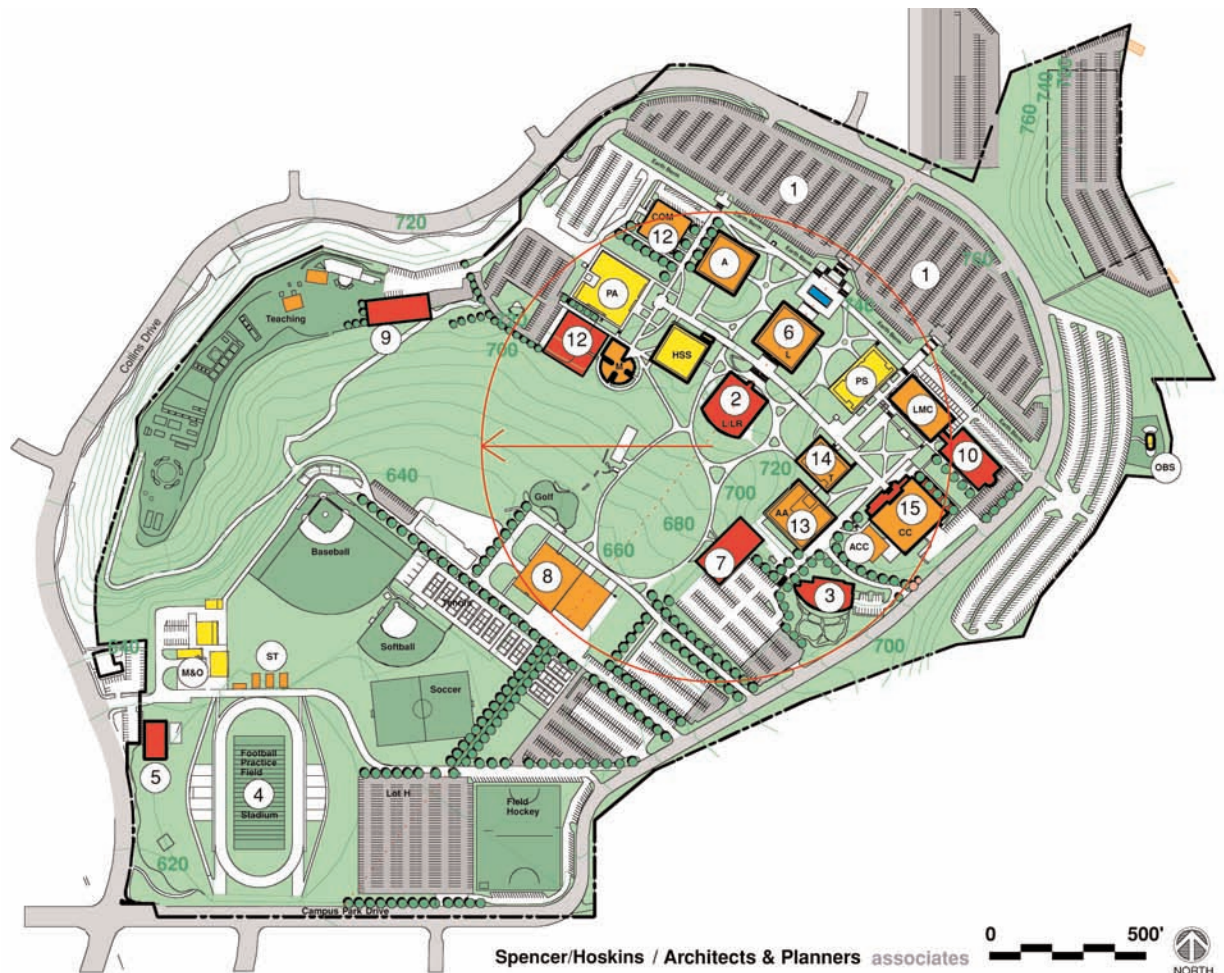


# **Moorpark College Facilities Master Plan 2005 - 2015**

## ***Appendix***

# Moorpark College Facilities Master Plan 2005-2015 - Appendix

This appendix provides information relative to the process of the facilities planning in this document. The following pages contain plans that re-enforce the conceptual ideas and planning principles behind the planning of Moorpark College. The plans provide information critical to the location of future building projects and definition of exterior spaces. Some plans also provide additional planning for pedestrian and vehicular circulation, parking, emergency vehicle access and emergency phone systems, construction phasing and landscape development.



**Legend:** ■ Proposed New Building or Building Remodel ■ Remodeled Buildings ■ Existing Buildings Unaffected ■ Affected Building to be Remodeled ■ Additional and Upgraded Parking

## Master Plan Projects

- |  |  |  |
|--|--|--|
| 1. Parking Lots A, AA, B, C, D, & E    | 9. Exotic Animal Training and Management (EATM) Facility | 16. Simi Valley Center                               |
| 2. Library/Learning Resources Building | 10. Health Sciences Complex                              | 17. Infrastructure Update Projects                   |
| 3. Child Development Center            | 11. Conejo Valley Center                                 | 18. Landscape and Irrigation                         |
| 4. Track & Field Improvements          | 12. Arts Complex & Communications Building Remodel       | 19. Parking Projects                                 |
| 5. Warehouse                           | 13. Secondary Effects: Applied Arts                      | 20. Expansion of Library/Learning Resources Building |
| 6. Library Renovation                  | 14. Technology Building Modernization                    | 21. Remodel Campus Entrances                         |
| 7. Academic Center                     | 15. Student Center (Union) Remodel/Expand                | 22. Retrofit Remaining Buildings for Code Compliance |
| 8. Physical Education Renovation       |  |  |

## Existing Buildings

- |   |  |
|---|--|
| M&O Maintenance & Operations                | AA Applied Arts Building                                   |
| PA Performing Arts Theater                  | ACC Student Support  |
| A Administration                            | GYM Gymnasium  |
| HSS Humanities and Social Sciences Building | ST Stadium Annex Modular Classrooms                        |
| LMC Life Science and Math Center            | EATM EATM Program Administration, Storage, and Zoo grounds |
| PS Physical Science                         | OBS Observatory  |
| T Business and Technology Building          |  |

## CAMPUS ORIENTATION

The diagram to the right shows that buildings and open space are placed to reinforce the strong north to south pedestrian promenades transgressing campus. Serving to connect this primary circulation piece to the campus edges are east to west pathways. The north to south and the east to west pathways allows a strong connection between the central open area and the rest of the campus.



### Master Plan Projects

- |  |  |  |
|--|--|--|
| 1. Parking Lots A, AA, B, C, D, & E    | 9. Exotic Animal Training and Management (EATM) Facility | 16. Simi Valley Center                               |
| 2. Library/Learning Resources Building | 10. Health Sciences Complex                              | 17. Infrastructure Update Projects                   |
| 3. Child Development Center            | 11. Conejo Valley Center                                 | 18. Landscape and Irrigation                         |
| 4. Track & Field Improvements          | 12. Arts Complex & Communications Building Remodel       | 19. Parking Projects                                 |
| 5. Warehouse                           | 13. Secondary Effects: Applied Arts                      | 20. Expansion of Library/Learning Resources Building |
| 6. Library Renovation                  | 14. Technology Building Modernization                    | 21. Remodel Campus Entrances                         |
| 7. Academic Center                     | 15. Student Center (Union) Remodel/Expand                | 22. Retrofit Remaining Buildings for Code Compliance |
| 8. Physical Education Renovation       |  |  |

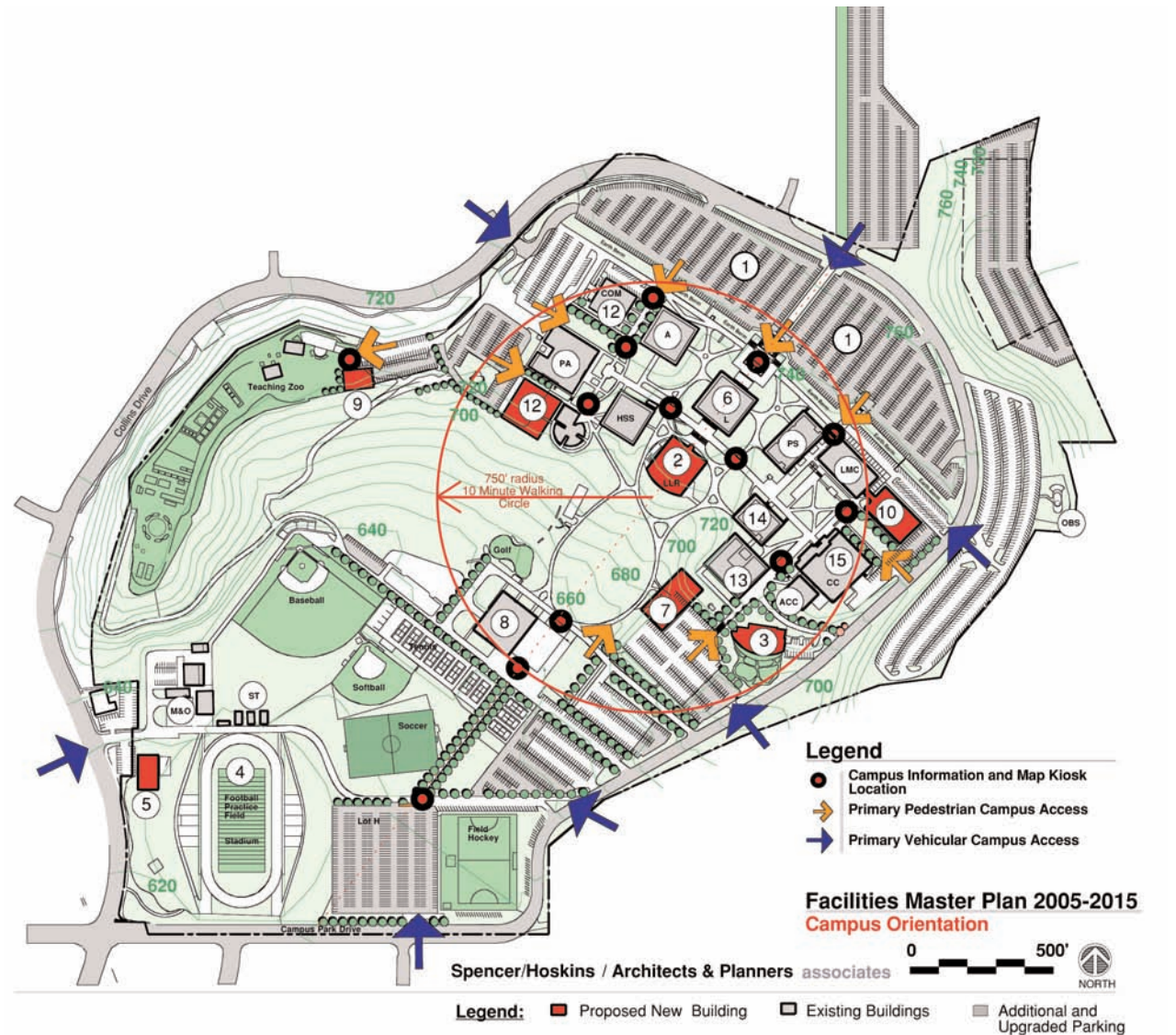
### Existing Buildings

- |   |  |
|---|--|
| M&O Maintenance & Operations                | AA Applied Arts Building                                   |
| PA Performing Arts Theater                  | ACC Student Support  |
| A Administration                            | GYM Gymnasium  |
| HSS Humanities and Social Sciences Building | ST Stadium Annex Modular Classrooms                        |
| LMC Life Science and Math Center            | EATM EATM Program Administration, Storage, and Zoo grounds |
| PS Physical Science                         | OBS Observatory  |
| T Business and Technology Building          |  |



## ORIENTATION

Orientation on a campus can be established with the use of access points and information kiosks. The diagram to the right shows the placement of such tools throughout the campus entries. When compared with the previous diagram, it becomes apparent that the pedestrian access points are located at the beginning of the pathways and the campus information kiosks are distributed along these pathways. Visitor information is placed at intersections of vehicular pathways to orient visitors.



### Master Plan Projects

1. Parking Lots A, AA, B, C, D, & E
2. Library/Learning Resources Building
3. Child Development Center
4. Track & Field Improvements
5. Warehouse
6. Library Renovation
7. Academic Center
8. Physical Education Renovation

9. Exotic Animal Training and Management (EATM) Facility
10. Health Sciences Complex
11. Conejo Valley Center
12. Arts Complex & Communications Building Remodel
13. Secondary Effects: Applied Arts
14. Technology Building Modernization
15. Student Center (Union) Remodel/Expand

16. Simi Valley Center
17. Infrastructure Update Projects
18. Landscape and Irrigation
19. Parking Projects
20. Expansion of Library/Learning Resources Building
21. Remodel Campus Entrances
22. Retrofit Remaining Buildings for Code Compliance

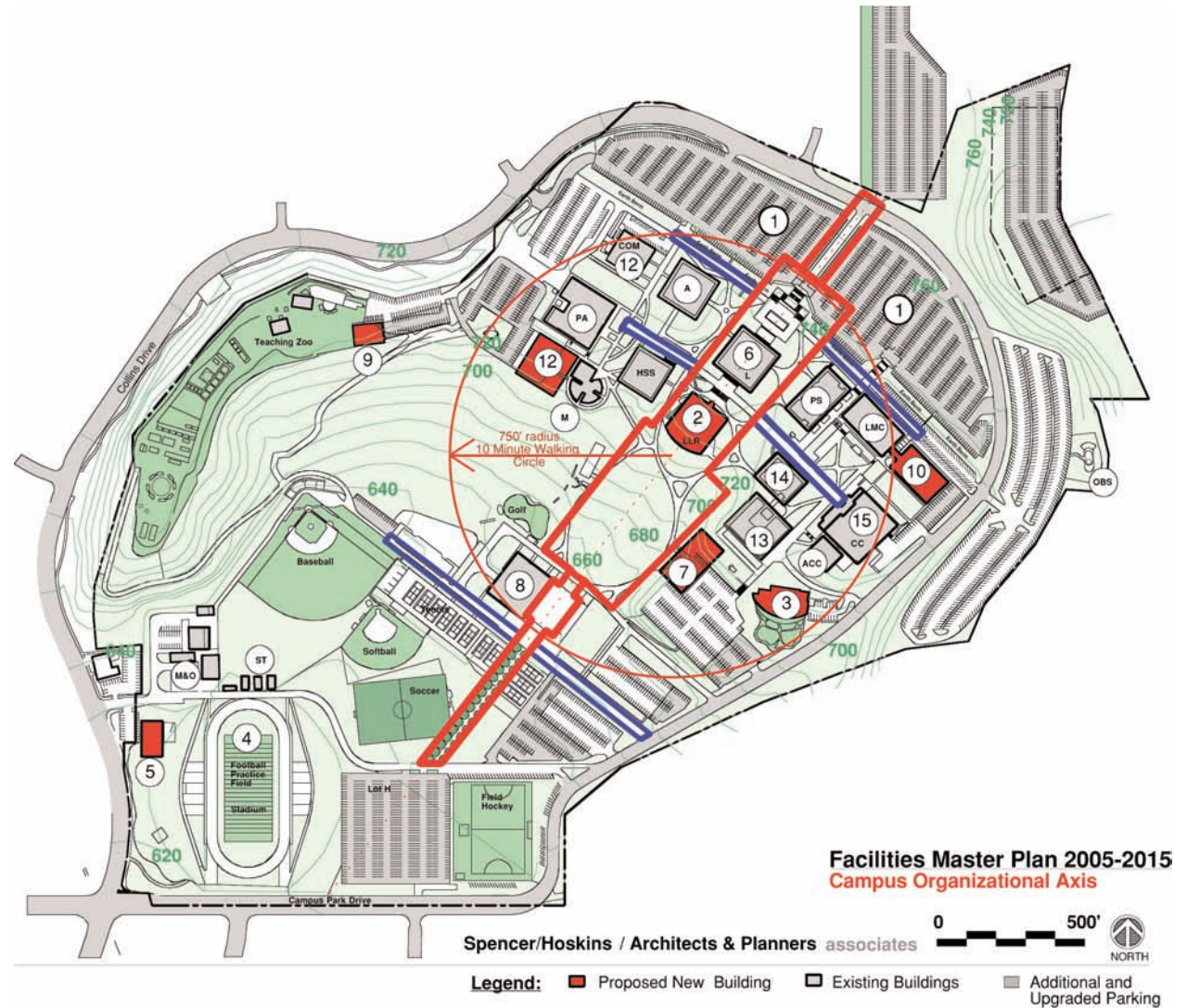
### Existing Buildings

- M&O Maintenance & Operations  
 PA Performing Arts Theater  
 A Administration  
 HSS Humanities and Social Sciences Building  
 LMC Life Science and Math Center  
 PS Physical Science  
 T Business and Technology Building

- AA Applied Arts Building  
 ACC Student Support  
 GYM Gymnasium  
 ST Stadium Annex Modular Classrooms  
 EATM EATM Program Administration, Storage, and Zoo grounds  
 OBS Observatory

## CAMPUS ORGANIZATIONAL SPINE

The previously mentioned pathways also serve the function of organizing and holding together the campus. Buildings and open space locations are formed by the strong north to south axis as well as the east to west axis.



### Master Plan Projects

1. Parking Lots A, AA, B, C, D, & E
2. Library/Learning Resources Building
3. Child Development Center
4. Track & Field Improvements
5. Warehouse
6. Library Renovation
7. Academic Center
8. Physical Education Renovation

9. Exotic Animal Training and Management (EATM) Facility
10. Health Sciences Complex
11. Conejo Valley Center
12. Arts Complex & Communications Building Remodel
13. Secondary Effects: Applied Arts
14. Technology Building Modernization
15. Student Center (Union) Remodel/Expand

16. Simi Valley Center
17. Infrastructure Update Projects
18. Landscape and Irrigation
19. Parking Projects
20. Expansion of Library/Learning Resources Building
21. Remodel Campus Entrances
22. Retrofit Remaining Buildings for Code Compliance

### Existing Buildings

- M&O Maintenance & Operations  
PA Performing Arts Theater  
A Administration  
HSS Humanities and Social Sciences Building  
LMC Life Science and Math Center  
PS Physical Science  
T Business and Technology Building

- AA Applied Arts Building  
ACC Student Support  
GYM Gymnasium  
ST Stadium Annex Modular Classrooms  
EATM EATM Program Administration, Storage, and Zoo grounds  
OBS Observatory



## CAMPUS OPEN SPACE

The original campus plan allowed the campus density to be balanced between the number of single story buildings, two-story buildings and the definition of exterior promenades and quads. This master plan identifies the importance of the balance and therefore has proposed to use more multiple story buildings, as well as using the edges of the campus and the sloped areas to build and integrate into the overall plan to maintain an acceptable amount of exterior space. The open spaces allow interaction between individuals and groups, provide orientation, and facilitate security by creating clear lines of sight.



### Master Plan Projects

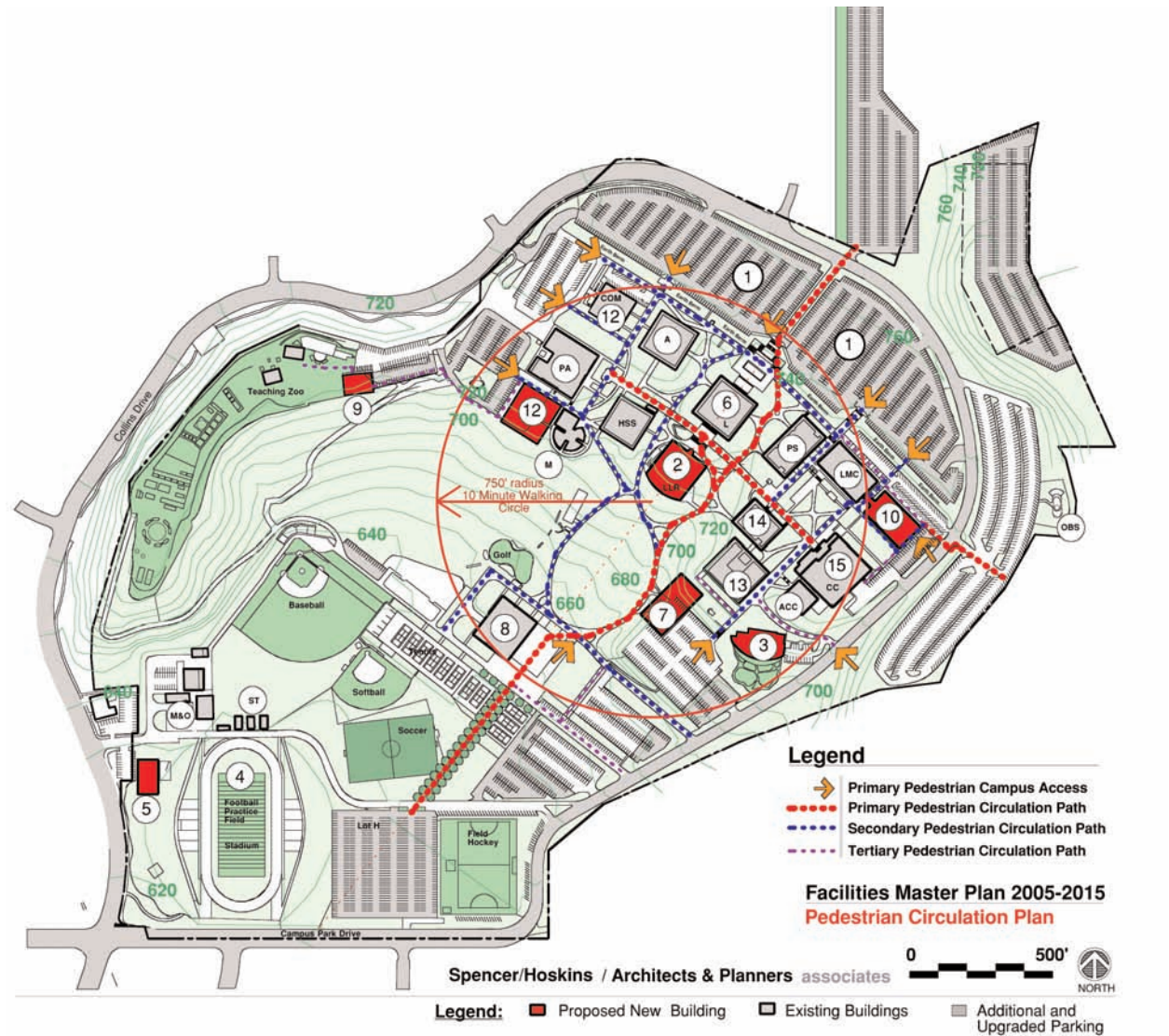
- |  |  |  |
|--|--|--|
| 1. Parking Lots A, AA, B, C, D, & E    | 9. Exotic Animal Training and Management (EATM) Facility | 16. Simi Valley Center                               |
| 2. Library/Learning Resources Building | 10. Health Sciences Complex                              | 17. Infrastructure Update Projects                   |
| 3. Child Development Center            | 11. Conejo Valley Center                                 | 18. Landscape and Irrigation                         |
| 4. Track & Field Improvements          | 12. Arts Complex & Communications Building Remodel       | 19. Parking Projects                                 |
| 5. Warehouse                           | 13. Secondary Effects: Applied Arts                      | 20. Expansion of Library/Learning Resources Building |
| 6. Library Renovation                  | 14. Technology Building Modernization                    | 21. Remodel Campus Entrances                         |
| 7. Academic Center                     | 15. Student Center (Union) Remodel/Expand                | 22. Retrofit Remaining Buildings for Code Compliance |

### Existing Buildings

- |   |  |
|---|--|
| M&O Maintenance & Operations                | AA Applied Arts Building                                   |
| PA Performing Arts Theater                  | ACC Student Support  |
| A Administration                            | GYM Gymnasium  |
| HSS Humanities and Social Sciences Building | ST Stadium Annex Modular Classrooms                        |
| LMC Life Science and Math Center            | EATM EATM Program Administration, Storage, and Zoo grounds |
| PS Physical Science                         | OBS Observatory  |
| T Business and Technology Building          |  |

## PEDESTRIAN CIRCULATION PLAN

The primary pedestrian circulation on campus follows the north to south axis as well as the east to west axes with added circulation from the physical education area at the south end of the campus. The secondary circulation occurs from the various entrances and parking lots at the perimeter of the campus. The tertiary circulation occurs at the campus's edges by pedestrians entering campus or near the football stadium, stadium annex, the field hockey field and the M&O facilities.



### Master Plan Projects

1. Parking Lots A, AA, B, C, D, & E
2. Library/Learning Resources Building
3. Child Development Center
4. Track & Field Improvements
5. Warehouse
6. Library Renovation
7. Academic Center
8. Physical Education Renovation

9. Exotic Animal Training and Management (EATM) Facility
10. Health Sciences Complex
11. Conejo Valley Center
12. Arts Complex & Communications Building Remodel
13. Secondary Effects: Applied Arts
14. Technology Building Modernization
15. Student Center (Union) Remodel/Expand

16. Simi Valley Center
17. Infrastructure Update Projects
18. Landscape and Irrigation
19. Parking Projects
20. Expansion of Library/Learning Resources Building
21. Remodel Campus Entrances
22. Retrofit Remaining Buildings for Code Compliance

### Existing Buildings

- |   |  |
|---|--|
| M&O Maintenance & Operations                | AA Applied Arts Building                                   |
| PA Performing Arts Theater                  | ACC Student Support  |
| A Administration                            | GYM Gymnasium  |
| HSS Humanities and Social Sciences Building | ST Stadium Annex Modular Classrooms                        |
| LMC Life Science and Math Center            | EATM EATM Program Administration, Storage, and Zoo grounds |
| PS Physical Science                         | OBS Observatory  |
| T Business and Technology Building          |  |



## VEHICULAR CIRCULATION PLAN

Primary vehicular circulation brings cars from the entrances along Campus Park Drive which circles the campus. Campus Park Drive allows adequate distribution of vehicles through the perimeter of the campus and to the existing parking lots. It also provides a complete loop system which relieves congestion at peak times.

Secondary roads are primarily located off the main road at the perimeter and provide primary access to the parking lots. The college has a system of restricted roads throughout the campus and along the sloped hillside for maintenance vehicles. The additional restricted roads allow maintenance and police to access different points of the campus without having to use Campus Park Road during peak traffic times.



### Master Plan Projects

- |  |  |  |
|--|--|--|
| 1. Parking Lots A, AA, B, C, D, & E    | 9. Exotic Animal Training and Management (EATM) Facility | 16. Simi Valley Center                               |
| 2. Library/Learning Resources Building | 10. Health Sciences Complex                              | 17. Infrastructure Update Projects                   |
| 3. Child Development Center            | 11. Conejo Valley Center                                 | 18. Landscape and Irrigation                         |
| 4. Track & Field Improvements          | 12. Arts Complex & Communications Building Remodel       | 19. Parking Projects                                 |
| 5. Warehouse                           | 13. Secondary Effects: Applied Arts                      | 20. Expansion of Library/Learning Resources Building |
| 6. Library Renovation                  | 14. Technology Building Modernization                    | 21. Remodel Campus Entrances                         |
| 7. Academic Center                     | 15. Student Center (Union) Remodel/Expand                | 22. Retrofit Remaining Buildings for Code Compliance |
| 8. Physical Education Renovation       |  |  |

### Existing Buildings

- |   |  |
|---|--|
| M&O Maintenance & Operations                | AA Applied Arts Building                                   |
| PA Performing Arts Theater                  | ACC Student Support  |
| A Administration                            | GYM Gymnasium  |
| HSS Humanities and Social Sciences Building | ST Stadium Annex Modular Classrooms                        |
| LMC Life Science and Math Center            | EATM EATM Program Administration, Storage, and Zoo grounds |
| PS Physical Science                         | OBS Observatory  |
| T Business and Technology Building          |  |



## PUBLIC TRANSPORTATION

The Transit Center on the west edge of campus near the Communications building provides access to the campus by those using public transportation. With its location and convenient road access, it allows the large constituency of physically challenged and elderly visitors adequate and efficient access to the College.



### Master Plan Projects

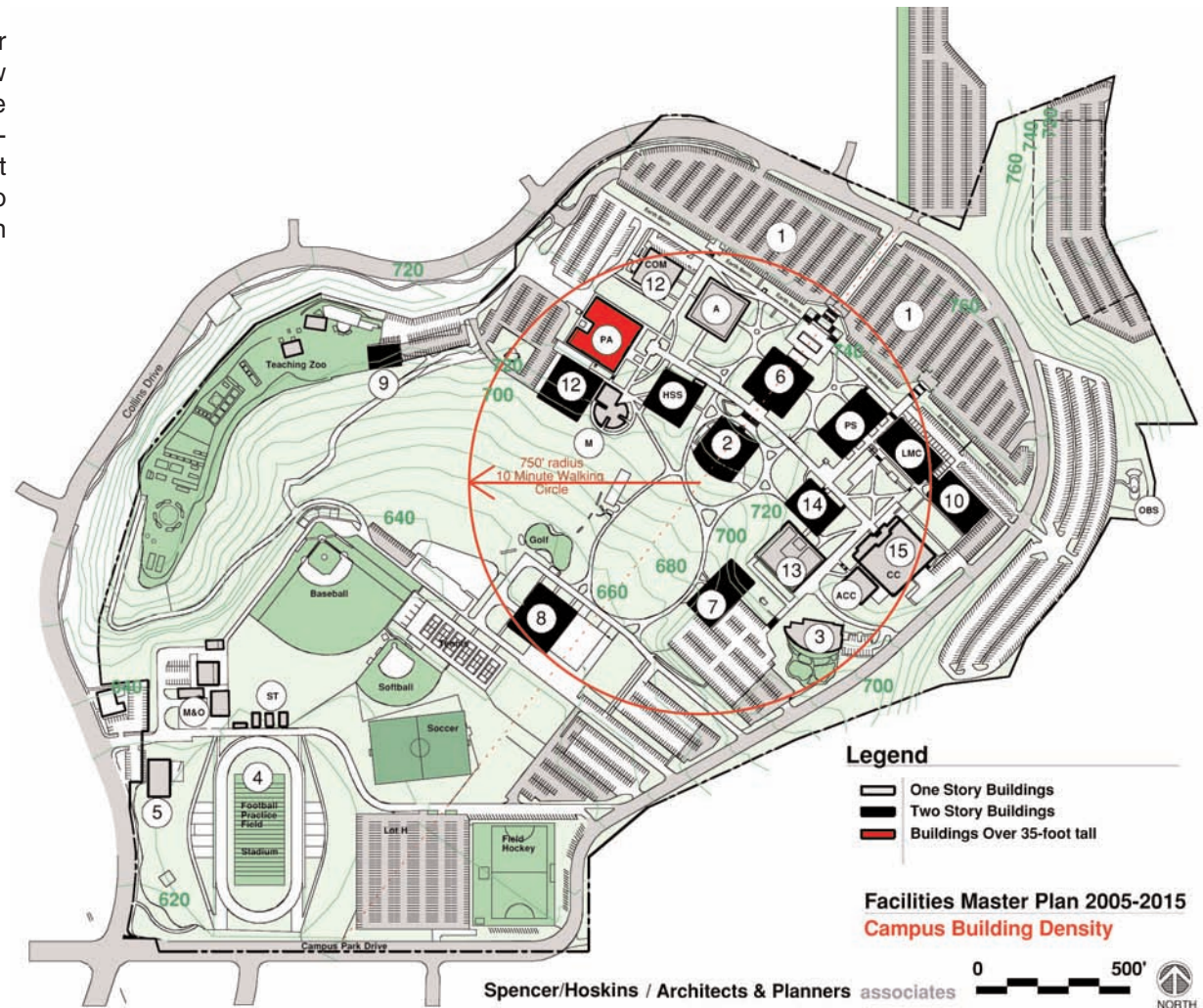
- |  |  |  |
|--|--|--|
| 1. Parking Lots A, AA, B, C, D, & E    | 9. Exotic Animal Training and Management (EATM) Facility | 16. Simi Valley Center                               |
| 2. Library/Learning Resources Building | 10. Health Sciences Complex                              | 17. Infrastructure Update Projects                   |
| 3. Child Development Center            | 11. Conejo Valley Center                                 | 18. Landscape and Irrigation                         |
| 4. Track & Field Improvements          | 12. Arts Complex & Communications Building Remodel       | 19. Parking Projects                                 |
| 5. Warehouse                           | 13. Secondary Effects: Applied Arts                      | 20. Expansion of Library/Learning Resources Building |
| 6. Library Renovation                  | 14. Technology Building Modernization                    | 21. Remodel Campus Entrances                         |
| 7. Academic Center                     | 15. Student Center (Union) Remodel/Expand                | 22. Retrofit Remaining Buildings for Code Compliance |

### Existing Buildings

- |   |  |
|---|--|
| M&O Maintenance & Operations                | AA Applied Arts Building                                   |
| PA Performing Arts Theater                  | ACC Student Support  |
| A Administration                            | GYM Gymnasium  |
| HSS Humanities and Social Sciences Building | ST Stadium Annex Modular Classrooms                        |
| LMC Life Science and Math Center            | EATM EATM Program Administration, Storage, and Zoo grounds |
| PS Physical Science                         | OBS Observatory  |
| T Business and Technology Building          |  |

## CAMPUS BUILDING DENSITY

The college has maintained a successful balance in their density throughout the past four decades. Most new buildings will be multi story with few exceptions to take advantage of the level areas and to maintain a consistency with the existing campus. The image to the right demonstrates a final campus plan with a majority of two story buildings organized around open quads and open pedestrian promenades.



### Master Plan Projects

1. Parking Lots A, AA, B, C, D, & E
2. Library/Learning Resources Building
3. Child Development Center
4. Track & Field Improvements
5. Warehouse
6. Library Renovation
7. Academic Center
8. Physical Education Renovation

9. Exotic Animal Training and Management (EATM) Facility
10. Health Sciences Complex
11. Conejo Valley Center
12. Arts Complex & Communications Building Remodel
13. Secondary Effects: Applied Arts
14. Technology Building Modernization
15. Student Center (Union) Remodel/Expand

16. Simi Valley Center
17. Infrastructure Update Projects
18. Landscape and Irrigation
19. Parking Projects
20. Expansion of Library/Learning Resources Building
21. Remodel Campus Entrances
22. Retrofit Remaining Buildings for Code Compliance

### Existing Buildings

- M&O Maintenance & Operations
- PA Performing Arts Theater
- A Administration
- HSS Humanities and Social Sciences Building
- LMC Life Science and Math Center
- PS Physical Science
- T Business and Technology Building

- AA Applied Arts Building
- ACC Student Support
- GYM Gymnasium
- ST Stadium Annex Modular Classrooms
- EATM EATM Program Administration, Storage, and Zoo grounds
- OBS Observatory



## EMERGENCY VEHICLE ACCESS

Limited access roads from the entrances to the campus core along with Campus Park Drive serve to provide emergency access to most of the buildings. Secondary and restricted vehicular paths, as defined in the previous diagrams, provide access to additional annex portable buildings at the south of campus and to physical education fields and facilities. All new buildings were located to use the existing emergency vehicle access pathways.



### Master Plan Projects

1. Parking Lots A, AA, B, C, D, & E
2. Library/Learning Resources Building
3. Child Development Center
4. Track & Field Improvements
5. Warehouse
6. Library Renovation
7. Academic Center
8. Physical Education Renovation

9. Exotic Animal Training and Management (EATM) Facility
10. Health Sciences Complex
11. Conejo Valley Center
12. Arts Complex & Communications Building Remodel
13. Secondary Effects: Applied Arts
14. Technology Building Modernization
15. Student Center (Union) Remodel/Expand

16. Simi Valley Center
17. Infrastructure Update Projects
18. Landscape and Irrigation
19. Parking Projects
20. Expansion of Library/Learning Resources Building
21. Remodel Campus Entrances
22. Retrofit Remaining Buildings for Code Compliance

### Existing Buildings

- M&O Maintenance & Operations
- PA Performing Arts Theater
- A Administration
- HSS Humanities and Social Sciences Building
- LMC Life Science and Math Center
- PS Physical Science
- T Business and Technology Building

- AA Applied Arts Building
- ACC Student Support
- GYM Gymnasium
- ST Stadium Annex Modular Classrooms
- EATM EATM Program Administration, Storage, and Zoo grounds
- OBS Observatory



## EMERGENCY PHONE ACCESS

The diagram to the right shows the open, wide pedestrian pathways that aide in general and handicapped accessibility. The widening of the pathways served to better define the pedestrian circulation throughout campus. It also created an opportunity to incorporate landscape features and lighting along the pathways which creates better quality of space.



Existing emergency call station, parking lot B



### Master Plan Projects

- Parking Lots A, AA, B, C, D, & E
- Library/Learning Resources Building
- Child Development Center
- Track & Field Improvements
- Warehouse
- Library Renovation
- Academic Center
- Physical Education Renovation

- Exotic Animal Training and Management (EATM) Facility
- Health Sciences Complex
- Conejo Valley Center
- Arts Complex & Communications Building Remodel
- Secondary Effects: Applied Arts
- Technology Building Modernization
- Student Center (Union) Remodel/Expand

- Simi Valley Center
- Infrastructure Update Projects
- Landscape and Irrigation
- Parking Projects
- Expansion of Library/Learning Resources Building
- Remodel Campus Entrances
- Retrofit Remaining Buildings for Code Compliance

### Existing Buildings

- M&O Maintenance & Operations  
PA Performing Arts Theater  
A Administration  
HSS Humanities and Social Sciences Building  
LMC Life Science and Math Center  
PS Physical Science  
T Business and Technology Building

- AA Applied Arts Building  
ACC Student Support  
GYM Gymnasium  
ST Stadium Annex Modular Classrooms  
EATM EATM Program Administration, Storage, and Zoo grounds  
OBS Observatory



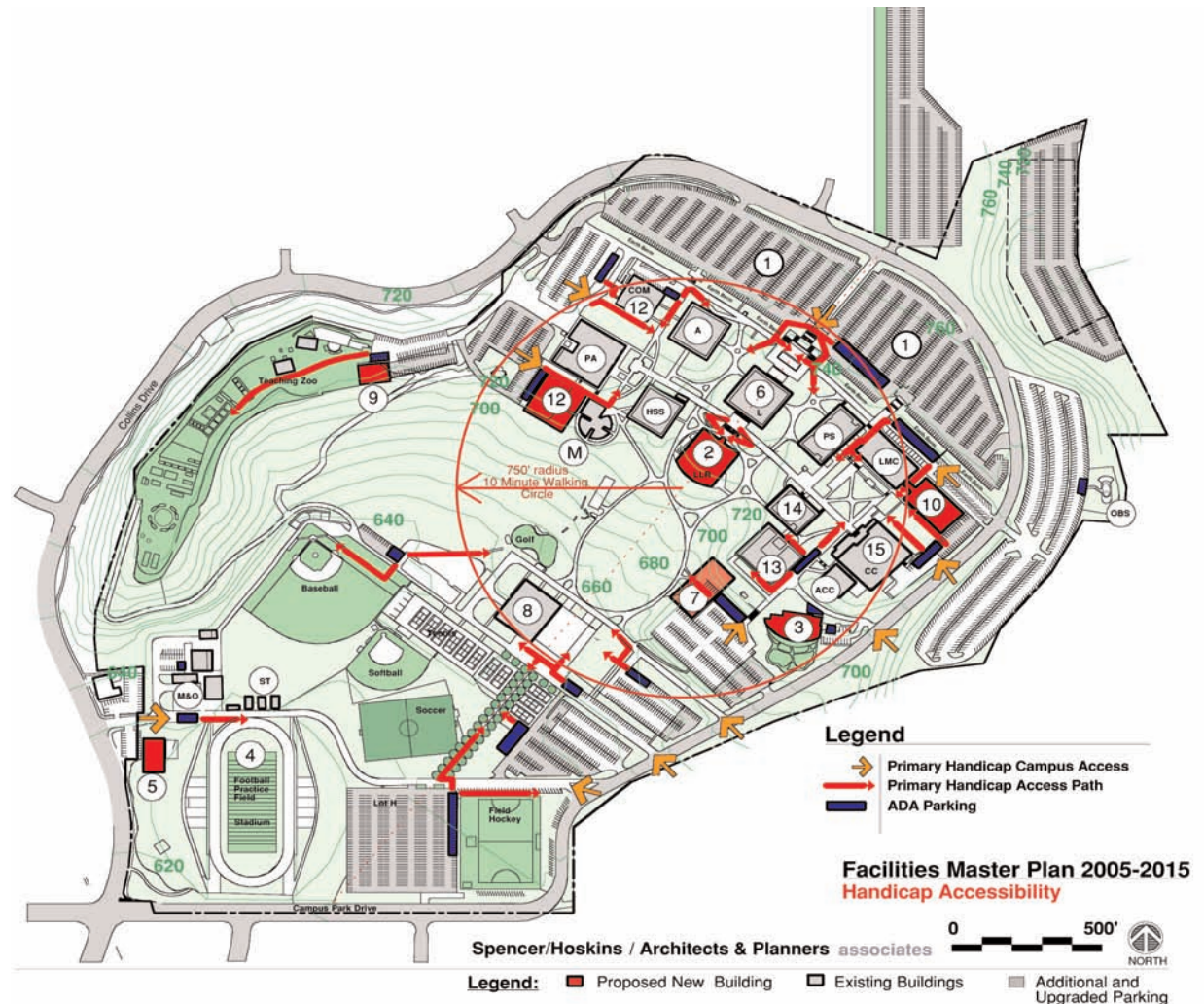
## HANDICAP ACCESS

Moorpark College was constructed on a relatively steep site. This usually presents many problems for accessibility, without the extensive use of ramps and elevators. The college's original planning to provide a loop road with access to perimeter parking and connections between parking areas and the campus core, has made it possible to maintain accessibility to most areas and buildings throughout the campus. The designation of handicapped parking throughout the campus, as demonstrated on the image to the right, also provides adequate accessible parking at every level and facility throughout the campus.

New buildings will continue to provide adequate parking and accessibility. New buildings shall also adhere to new "Universal Design" standards. Existing buildings and site conditions should also be upgraded using universal guidelines where needed. Throughout the planned construction phases of the campus adequate planning and coordinating should take place not to disturb the accessibility to all functioning facilities.



Handicap accessible parking on parking lot B and C



### Master Plan Projects

1. Parking Lots A, AA, B, C, D, & E
2. Library/Learning Resources Building
3. Child Development Center
4. Track & Field Improvements
5. Warehouse
6. Library Renovation
7. Academic Center
8. Physical Education Renovation

9. Exotic Animal Training and Management (EATM) Facility
10. Health Sciences Complex
11. Conejo Valley Center
12. Arts Complex & Communications Building Remodel
13. Secondary Effects: Applied Arts
14. Technology Building Modernization
15. Student Center (Union) Remodel/Expand

16. Simi Valley Center
17. Infrastructure Update Projects
18. Landscape and Irrigation
19. Parking Projects
20. Expansion of Library/Learning Resources Building
21. Remodel Campus Entrances
22. Retrofit Remaining Buildings for Code Compliance

### Existing Buildings

- M&O Maintenance & Operations  
PA Performing Arts Theater  
A Administration  
HSS Humanities and Social Sciences Building  
LMC Life Science and Math Center  
PS Physical Science  
T Business and Technology Building

- AA Applied Arts Building  
ACC Student Support  
GYM Gymnasium  
ST Stadium Annex Modular Classrooms  
EATM EATM Program Administration, Storage, and Zoo grounds  
OBS Observatory



## CONSTRUCTION STAGING PLAN

The diagram to the right shows the various construction staging sites that will be affected by the development of the corresponding building project. Two main concerns, are the phasing of the projects and the affect on students, staff and existing utility infrastructure. The second concern is the loss of parking during the construction of many of the projects. The phasing of new building projects and parking projects will be critical to maintain a good parking ratio with the number of students.

The construction phasing sites located on the map to the right were chosen as close as possible to the building projects and are considered most efficient in providing easy access for construction, freeing up the existing pedestrian and vehicular access and area that should be planned by each individual project to restore the landscape and irrigation.



### Master Plan Projects

1. Parking Lots A, AA, B, C, D, & E
2. Library/Learning Resources Building
3. Child Development Center
4. Track & Field Improvements
5. Warehouse
6. Library Renovation
7. Academic Center
8. Physical Education Renovation

9. Exotic Animal Training and Management (EATM) Facility
10. Health Sciences Complex
11. Conejo Valley Center
12. Arts Complex & Communications Building Remodel
13. Secondary Effects: Applied Arts
14. Technology Building Modernization
15. Student Center (Union) Remodel/Expand

16. Simi Valley Center
17. Infrastructure Update Projects
18. Landscape and Irrigation
19. Parking Projects
20. Expansion of Library/Learning Resources Building
21. Remodel Campus Entrances
22. Retrofit Remaining Buildings for Code Compliance

### Existing Buildings

- M&O Maintenance & Operations
- PA Performing Arts Theater
- A Administration
- HSS Humanities and Social Sciences Building
- LMC Life Science and Math Center
- PS Physical Science
- T Business and Technology Building

- AA Applied Arts Building
- ACC Student Support
- GYM Gymnasium
- ST Stadium Annex Modular Classrooms
- EATM EATM Program Administration, Storage, and Zoo grounds
- OBS Observatory



## LANDSCAPE PLAN

The diagram to the right shows the plans for landscaping which includes preserving the central green lawn area as well as the quality of open spaces on campus. Additional planting will be provided throughout the open pedestrian access and other open areas to enhance the space. This will include large trees in large open areas. Finally, landscape improvements are needed throughout the campus entrances.



### Master Plan Projects

1. Parking Lots A, AA, B, C, D, & E
2. Library/Learning Resources Building
3. Child Development Center
4. Track & Field Improvements
5. Warehouse
6. Library Renovation
7. Academic Center
8. Physical Education Renovation

9. Exotic Animal Training and Management (EATM) Facility
10. Health Sciences Complex
11. Conejo Valley Center
12. Arts Complex & Communications Building Remodel
13. Secondary Effects: Applied Arts
14. Technology Building Modernization
15. Student Center (Union) Remodel/Expand

16. Simi Valley Center
17. Infrastructure Update Projects
18. Landscape and Irrigation
19. Parking Projects
20. Expansion of Library/Learning Resources Building
21. Remodel Campus Entrances
22. Retrofit Remaining Buildings for Code Compliance

### Existing Buildings

- M&O Maintenance & Operations  
PA Performing Arts Theater  
A Administration  
HSS Humanities and Social Sciences Building  
LMC Life Science and Math Center  
PS Physical Science  
T Business and Technology Building

- AA Applied Arts Building  
ACC Student Support  
GYM Gymnasium  
ST Stadium Annex Modular Classrooms  
EATM EATM Program Administration, Storage, and Zoo grounds  
OBS Observatory