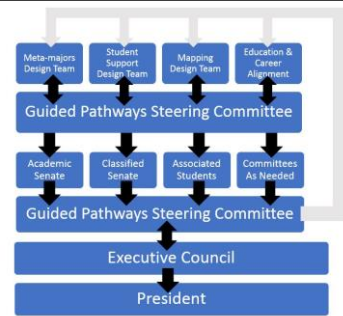


Guided Pathways

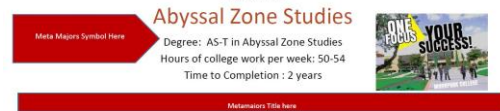
Beth Miller
Guided Pathways Program Mapping Design Team Lead
Moorpark College



Focus and Mission of Guided Pathways Program Mapping Design Workgroup

1. Create templates for programs to generate maps without locking them in
2. Set clear pathway for classes with and without prerequisites to lead to a path to success
3. Support electives to keep programs alive
4. Have a resource (map) to make faculty better mentors
5. Emphasize math and English requirements
6. Create a tool for people (students and parents) to have an idea for what courses should be taken in order to make counseling appointments a more efficient process

Program Map



Map title emphasizes time to completion and hours of college work per week

Programs may choose to offer additional maps for part time students (3 years to completion)

Red indicates transfer to CSU
Blue indicates transfer to UC
Lavender indicates certificate

Brief career description and program description

Career Description: Abyssal zone oceanographers study plate tectonics, the geology of the sea floor, and marine life and ecosystems in the abyssal zones.

Program Description: The Associate in Science Degree in Abyssal Zone Studies for Transfer (AS-T) is intended for students who plan to transfer and complete a Bachelor's degree in Abyssal Zone Studies, or a similar major at a CSU campus. Students completing the AS-T degree in Abyssal Zone Studies are guaranteed admission to the CSU system, but not necessarily to a particular CSU campus or major of their choice. Students should consult with a counselor for more information on university admission and transfer requirements, as this AS-T may not be the best option for students intending to transfer to a particular CSU campus or to a college or university that is not part of the CSU system.

Program-specific requirements

Programs use this space to emphasize any information they want students to be aware of such as:

- Admission requirements
- Prerequisites
- Multiple disciplines within a particular program

Program-specific Requirements: Several courses in this program require specialized training or preparation to ensure success. These include recommended prep courses, prerequisites, and co-requisites. Recommended prep courses and prerequisites represent unique skills without which the student is unlikely to succeed in the course or program. They should be completed with a grade of "C" or better prior to registration for the specific course.

Maps highlight:

- Course sequencing including prerequisite and corequisite and recommended prep
- Hours of work students should expect to commit to inside and outside of class

Semester 3	Units	Weekly hours in class	Weekly hours outside study	Advising Notes
CHEM M12 Introductory Chemistry	4	6	8	Prerequisites: MATH M01 or MATH M01B or equivalent
MATH M07 Pre-calculus and Trigonometry	6	6	12	
ENGL M01A or ENGL M01AH	4	4	8	
GEOL M02 Physical Geology	3	3	6	
GEOL M02L Physical Geology Lab	1	1	0	Prerequisite or concurrent enrollment: GEOL M02
Total Units per Semester	17	20	34	Total hours of college work per week: 34

Flexibility for General Education

Disciplines may suggest specific course(s)

Semester 3	Units	Weekly hours in class	Weekly hours outside study	Advising Notes
MATH M25B Calculus with Analytical Geometry II	5	5	10	Prerequisite: MATH M25A or MATH M25AH
BIOL M02A General Biology	4-5	3-4	6-8	Recommended for UCLA. Student may also select the following Life Sciences Courses: For UC transfer, select from IGETC Area 5B For CSU transfer, select from CSU GE Area B2 For both UC and CSU transfer, select from IGETC Area 4
GEOL M03A Earth History	3	3	6	
GEOL M03AL Earth History Lab	1	3	0	
Humanities	3	3	6	For UC transfer, select from IGETC Area 3B For CSU transfer, select from CSU GE Area C2 For both UC and CSU transfer, select from IGETC Area 3B
Total Units per Semester	16-17	17-18	28-30	Total hours of college work per week 45-48

Disciplines may allow students to choose among possible options

Links to labor market databases

Career information: The AS-T degree prepares students for transfer to a 4 year university. Many careers in abyssal zone studies require a B.S. or higher degree.
The data below are included as a reference tool and represent local and regional employment information related to this career:
US Department of Labor <http://www.onetonline.org>
Bureau of Labor Statistics <http://www.bls.gov/ooh/>

Next steps:

Counseling faculty will meet with content faculty to map each of the programs at Moorpark College

Is program mapping a one-time thing?

ALL DONE!

Sorry, program maps will need to be updated as course offerings and requirements from transfer institutions change.

Ready to start mapping your program?

Do you have additional suggestions or questions?

Feel free to contact me:
Beth Miller
bmiller@vcccd.edu
805-553-4082

