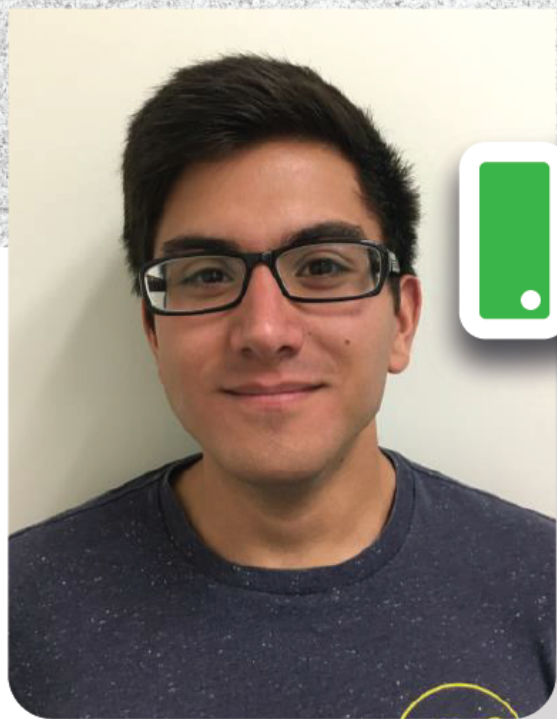


How to take a GREAT PHOTO for online submission for your ID card.



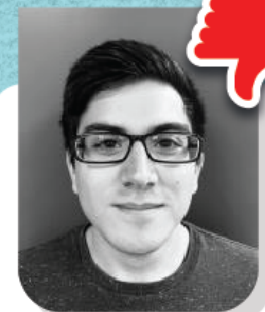
YES!

- Your ID card photo should be in COLOR and submitted at 1.5 x 2 inches (600 x 800 pixels) and the resolution should be 500kb.
- You should be looking directly at the camera.
- Your head should measure 1" to 1 3/8" in the photo.
- Your eyes should be 1 1/8" to 1 3/8" from the bottom of your photo.



NOPE!

Your background must be WHITE or OFF-WHITE only. With no cast shadows



NOPE!

Your photo should not be too light or too dark; no shadows across your face



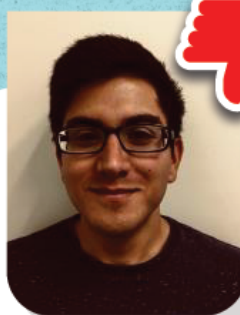
NOPE!

Your head must not be covered (unless you wear a head covering daily for religious purposes)



NOPE!

Your head must not be tilted to one side or shown in profile.



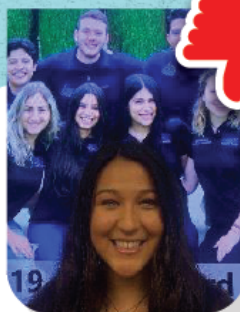
NOPE!

Your photo should be full, natural color; not overly green, blue or red. No SnapChat filters or other photo filters.



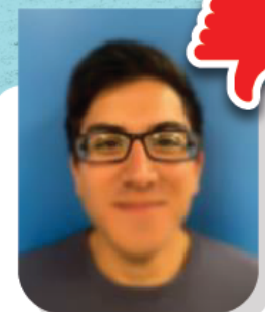
NOPE!

Your eyes must be visible; no sunglasses or presence of glare on your eyeglasses.



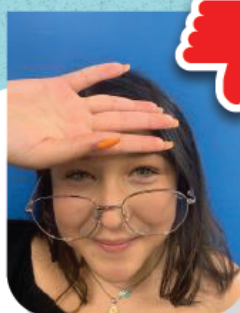
NOPE!

Your photo must be of JUST YOU! Do not include others in your photo.



NOPE!

Your photo should be of highest quality - not pixelated, grainy or fuzzy.



NOPE!

Your expression should be natural - no comical faces or broad smiles. Avoid hand gestures.



NOPE!

Your head must not be too large or too small in the photo