

Student Equity & Achievement (SEA) 2019-2022

Johnny Conley - Director of Student Equity

Rena Petrello - Math Faculty, Math and Science Center Faculty Liaison

**From 2015-18, the Student
Equity and Achievement
Committee
Oversaw 3 Grants**

```
graph TD; A["From 2015-18, the Student Equity and Achievement Committee Oversaw 3 Grants"] --> B["Basic Skills Grant"]; A --> C["Student Success and Equity Grant"]; A --> D["SSSP Grant"];
```

Basic Skills Grant

**Student Success and
Equity Grant**

SSSP Grant

**The Student Equity and
Achievement Committee
Now Oversees 1 Grant**



**Student Equity and
Achievement Grant**

CCCCO metrics

1. Access
2. Retention
3. Completion of transfer level English and Math
(first year of enrollment)
4. Completion of the vision goal
5. Transfer

DI student populations

1. African American (men & women)
2. American Indian (male)
3. Economically Disadvantaged (female)
4. Foster Youth (men & women)
5. Latino (men & women)
6. Undocumented (men & woment)
7. Veteran (female)

SEA budget & expenditures

Annual Allocation: \$3,562,311 (2019-2020)

Year 1

1000	instructional salaries	\$735,695
2000	non instructional salaries	\$1,134,328
3000	employee benefits	\$937,270
4000	supplies and materials	\$1,880
5000	other expenses and services	\$10,135
6000	capital outlay	\$0
7000	other outgo	\$20,000

Total=\$2,839,308

Carry forward: \$723,003

Year 2

1000	instructional salaries	\$172,581
2000	non instructional salaries	\$285,301
3000	employee benefits	\$60,064
4000	supplies and materials	\$48,185
5000	other expenses and services	\$71,109
6000	capital outlay	\$0
7000	other outgo	\$85,763

SEA budget 2020-2021

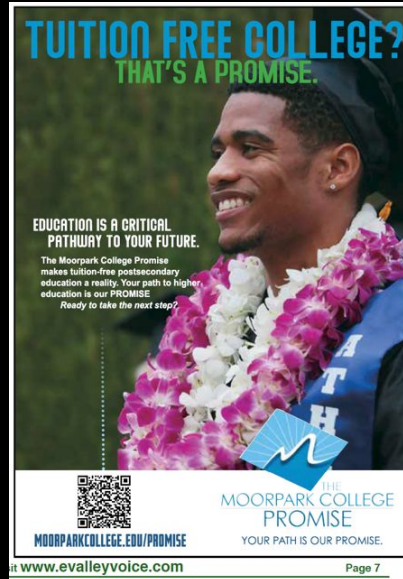
Annual Allocation: \$3,562,311

*All funds are used for permanent employees

Interventions

Student Support Services

- Targeted DI outreach and marketing
- First Year Experience (FYE)
- Second Year Experience (SYE)
- CHESS male initiative
- Veterans Resource Center (VRC)
- Raider Central Food Pantry
- **Teaching and Learning Center (TLC)**
- Equity Counseling and Support
- Undocumented Immigration Services
- Textbook Lending Program
- Direct student aid
- Working with DI populations and transfer center



*Moorpark College
Promise*

*International Thanksgiving
Celebration*



Academic Support/Professional Development

- Curriculum Development for support:
Transfer level Math and English
- Teaching Men and Women of Color Advocates
- CHES faculty circles
- A2MEND Student Charter
- Ventura County Colleges Anti-Racist Alliance (VCCARA)
- Moorpark College Social Justice workgroups
- Equity in the classroom
- Building Cultural Competence
- Anti-Racism Workshops



A2MEND Student Mentees



Teaching Men and Women of Color Advocates and Veteran's Center Tailgate

Upcoming/Future Equity Projects

- SEA website/logo
- USC eConvening Race and Equity Center trainings and Campus Climate survey (spring 2021)
- Summer/fall 2021 DI targeted recruitment
- Onboarding of student athletes (equity approach)
- African American Academic and Cultural Initiative
- Raider Central Food Share
- Prior credit for veteran students
- Campus wide engagement activities



Raider Central Food Share

Cultural Activities

- Black History Month (Feb)
- Women's History Month (March)
- Multicultural Day (April)
- Foster Youth Awareness Month (May)
- Hispanic Heritage Month (Sept-Oct)
- Veterans Awareness Week (Nov)



*Veterans Awareness Week:
The Eyes of Freedom Memorial*



Multicultural Day

Annual Data Evaluation

During spring 2021, I will be presenting the 2019-2020 annual data evaluation to the following campus stakeholders:

- SEA committee
- Academic Senate
- Classified Senate
- Associated Students

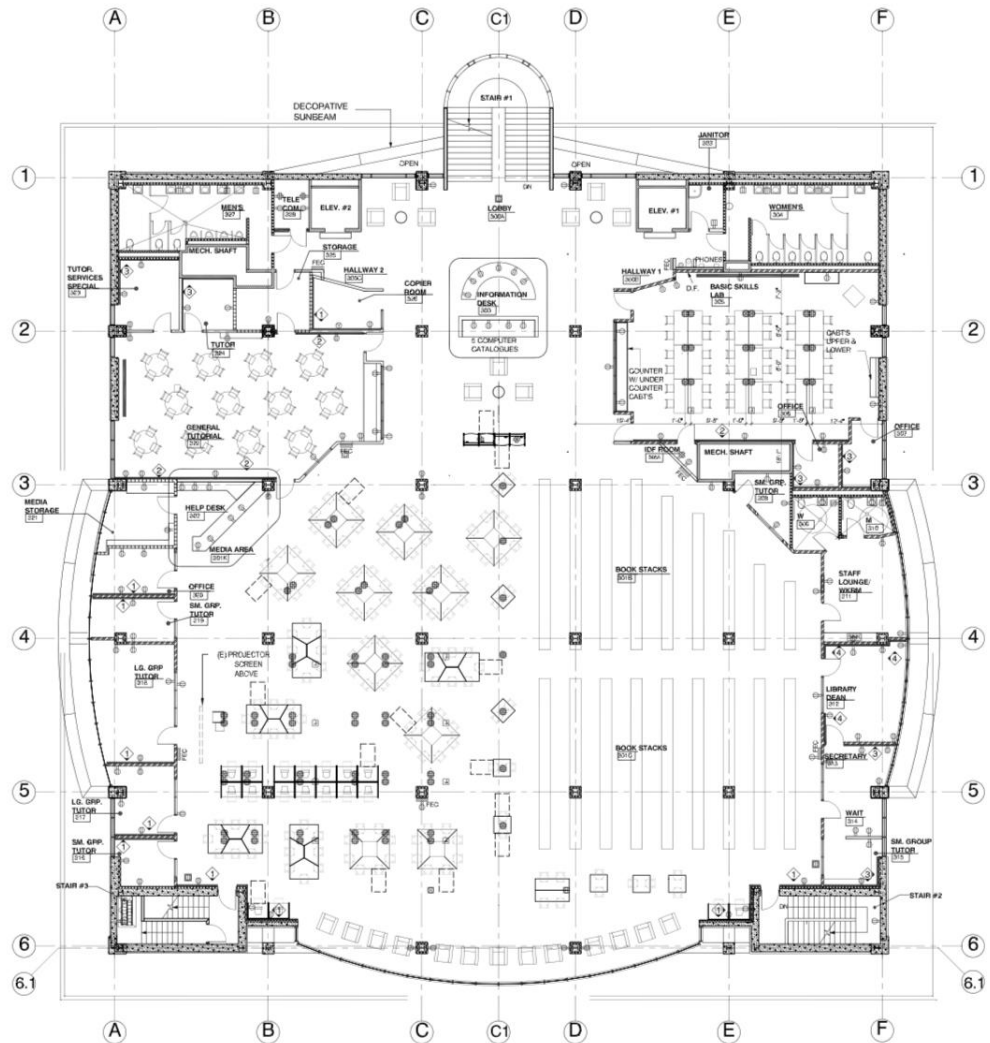
Notable Mentions

Learning Support Advisory Committee
(formerly known as “Basic Skills Committee”)

Library (3rd Floor) Renovation

Teaching and Learning Center:
New Furniture and Technology

The college hired architects to redesign the layout of the 3rd floor of the library.





Old Furniture

*Math and Science
Center*



New Chairs!
(Old Tables)

New
Tables!



New
Tables!





Sign-In Stations

New computers
to come soon!

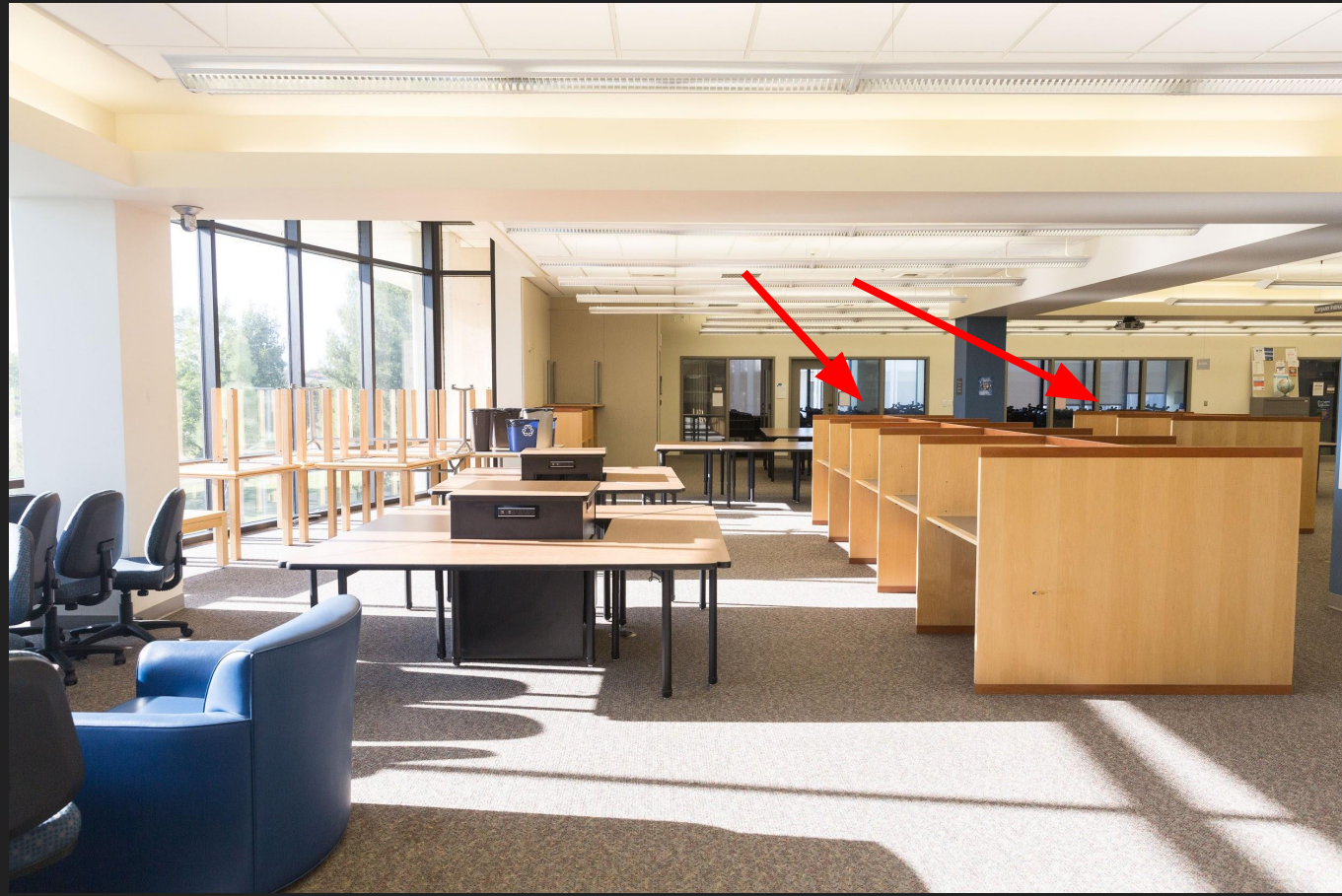






14 Computer Stations

5 new iMacs
(for accessibility
features)





Support for Students: AB-705

Solving Quadratic Equations:

❖ The three different ways to solve a quadratic equation are

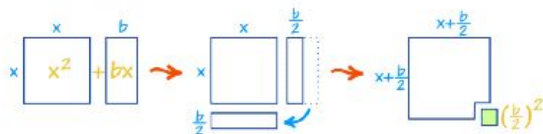
1. Factoring
2. using

The Quadratic Formula ...

$$x = \frac{-b \pm \sqrt{b^2 - 4ac}}{2a}$$

For Quadratic Equations
 $ax^2 + bx + c = 0$

3. Completing the square.



Step 1 - Divide all terms by a (the coefficient of x^2).

Step 2 - Move the number term (c/a) to the right side of the equation.

Step 3 - Complete the square on the left side of the equation and balance this by adding the same value to the right side of the equation.

56

Students Receive Free Workbooks for Mathematics “Support Courses”

Properties of Exponents

❖ In the expression a^n , a is called the _____, and n is the _____.

❖ Complete the following list of properties of exponents.

Properties of Exponents

If m, n are positive integers and a, b are real numbers, then:

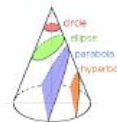
Properties of Exponents

For all nonzero real numbers a and b and integers m and n ,

WORDS	NUMBERS	ALGEBRA
Product of Powers Property To multiply powers with the same base, add the exponents.	$4^3 \cdot 4^2 =$	$a^m \cdot a^n =$
Quotient of Powers Property To divide powers with the same base, subtract the exponents.	$\frac{3^7}{3^2} =$	$\frac{a^m}{a^n} =$
Power of a Power Property To raise one power to another, multiply the exponents.	$(4^3)^2 =$	$(a^m)^n =$
Power of a Product Property To find the power of a product, apply the exponent to each factor.	$(3 \cdot 4)^2 =$	$(ab)^m =$
Power of a Quotient Property To find the power of a quotient, apply the exponent to the numerator and denominator.	$\left(\frac{3}{5}\right)^2 =$	$\left(\frac{a}{b}\right)^m =$

❖ True or False: If $a \neq 0$, then $a^0 = 1$.

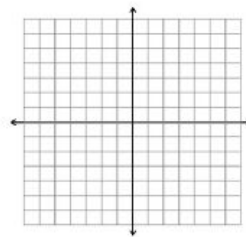
37



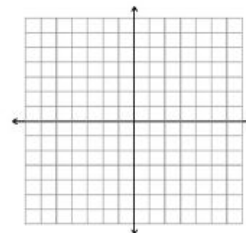
Examples

Graph the following. Be sure to include the vertex, axis of symmetry and all intercepts for each.

1. $y = x^2$



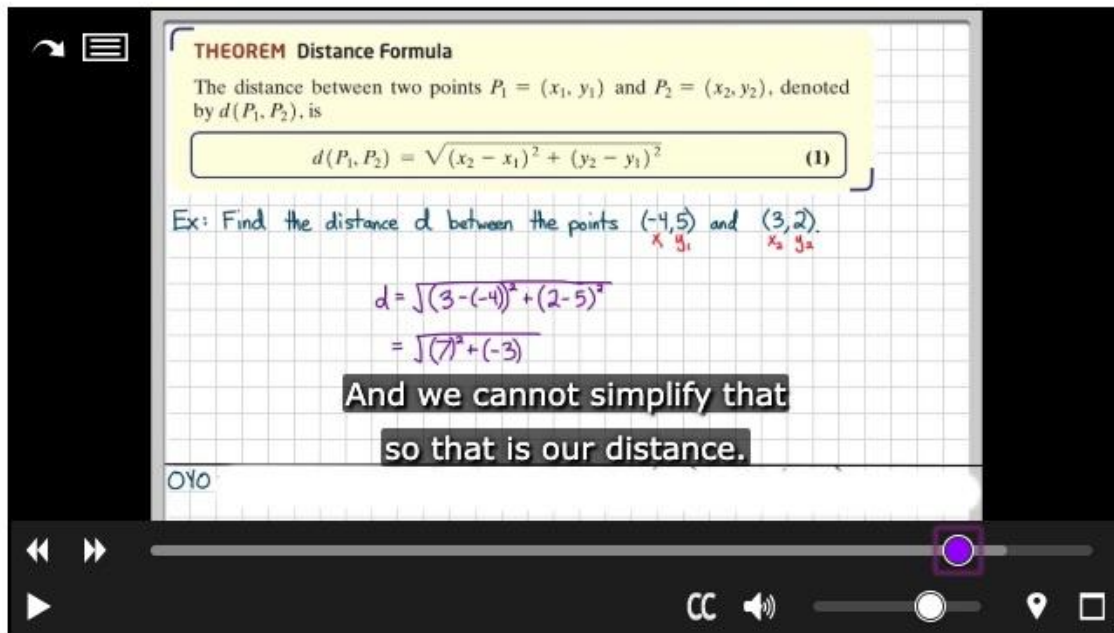
2. $y = x^2 - 1$



59

All content created by MC math faculty, Vahe Khachadorian and Katrina Topolinski

2.1: The Distance Formula



THEOREM Distance Formula

The distance between two points $P_1 = (x_1, y_1)$ and $P_2 = (x_2, y_2)$, denoted by $d(P_1, P_2)$, is

$$d(P_1, P_2) = \sqrt{(x_2 - x_1)^2 + (y_2 - y_1)^2} \quad (1)$$

Ex: Find the distance d between the points $(-4, 5)$ and $(3, 2)$.

$$d = \sqrt{(3 - (-4))^2 + (2 - 5)^2}$$
$$= \sqrt{(7)^2 + (-3)^2}$$

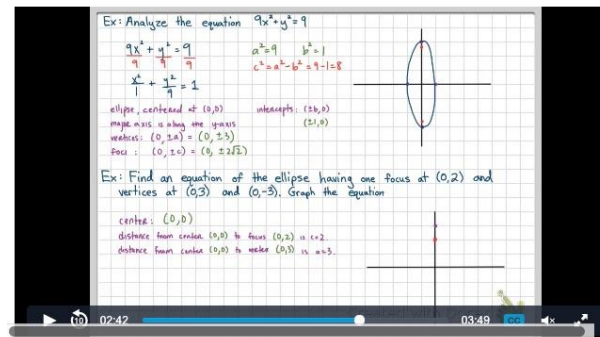
And we cannot simplify that
so that is our distance.

0:10

All content created by MC math
faculty, Katrina Topolinski and Vahe
Khachadoorian

Free Instructional
Videos for students in
Math “Support
Courses” (AB-705)

7.3: The Ellipse (Part 2)



Ex: Analyze the equation $9x^2 + y^2 = 9$

$$\frac{9x^2}{9} + \frac{y^2}{9} = \frac{9}{9}$$
$$\frac{x^2}{1} + \frac{y^2}{9} = 1$$

ellipse, centered at $(0, 0)$
major axis is along the y-axis
vertices: $(0, 3a) = (0, 3)$ and $(0, -3)$
foci: $(0, \pm c) = (0, \pm 2\sqrt{2})$

intercepts: $(\pm b, 0) = (\pm 1, 0)$

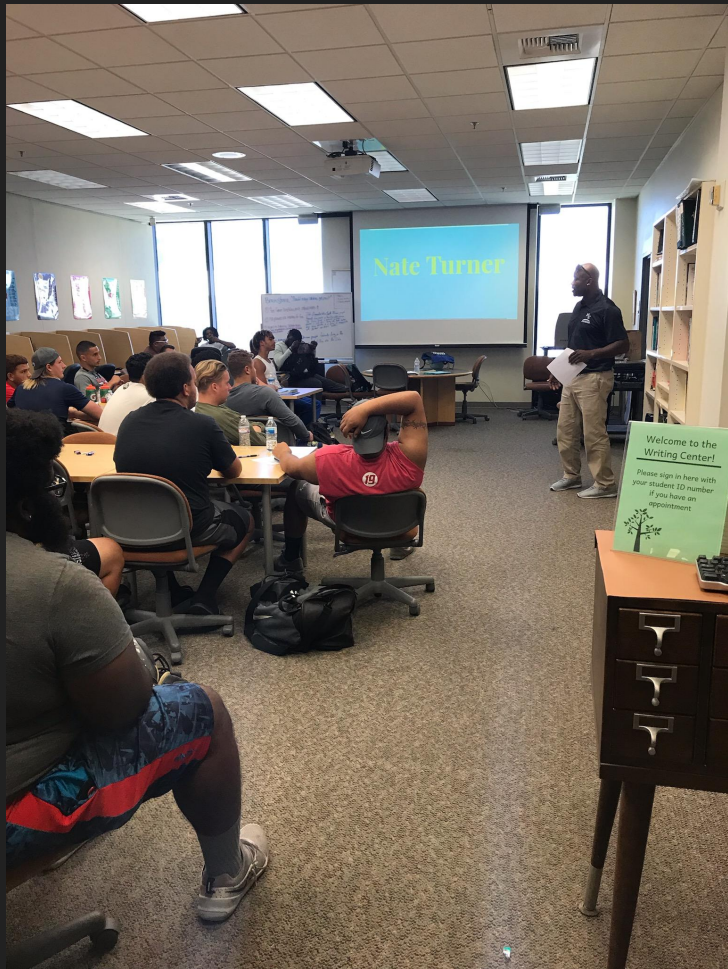
Ex: Find an equation of the ellipse having one focus at $(0, 2)$ and vertices at $(6, 3)$ and $(0, -3)$. Graph the equation

center: $(0, 0)$
distance from center $(0, 0)$ to focus $(0, 2)$ is $c = 2$
distance from center $(0, 0)$ to vertex $(6, 3)$ is $a = 3$

Faculty-Led Bridge Workshops for English and Math Students



MATH M725A - Bridge to MATH M25A						
Status	CRN	Pre/Coreq	Cred	Meeting Times		
OPEN	33071		0.5		F S	09:00a
				& Distance Education Class: Click		
CLOSED	33106		0.5		F S	09:00a
				& Distance Education Class: Click		
MATH M725B - Bridge to MATH M25B						
Status	CRN	Pre/Coreq	Cred	Meeting Times		
CLOSED	33078		0.5		F S	01:00p
				& Distance Education Class: Click		
MATH M901 - Bridge to MATH M01						
Status	CRN	Pre/Coreq	Cred	Meeting Times		
CLOSED	33053		0.0		F S	09:00a
				& Distance Education Class: Click		
MATH M903 - Bridge to MATH M03 (Lab Course)						
Status	CRN	Pre/Coreq	Cred	Meeting Times		
CLOSED	33064		0.0		F S	09:00a
				& Distance Education Class: Click		
CLOSED	33085		0.0		F S	01:00p
				& Distance Education Class: Click		
OPEN	33093		0.0		F S	09:00a
				& Distance Education Class: Click		
MATH M905 - Bridge to MATH M05, M07 or M11 (Lab Course)						
Status	CRN	Pre/Coreq	Cred	Meeting Times		
CLOSED	31470		0.0		F S	09:00a
				& Distance Education Class: Click		
CLOSED	31471		0.0		F S	01:00p
				& Distance Education Class: Click		
OPEN	31514		0.0		F S	01:00p
				& Distance Education Class: Click		



Summer Bridge For Athletes



Faculty Professional Development

Moorpark College
Hosted a 3CSN Event:
Growth Mindset for
STEM



Faculty Inquiry Group (FIG)

- *Creating Significant Learning Experiences* by L. Dee Fink
- *Teaching with your Mouth Shut* by Donald Finkel
- *Visible Learning for Teachers* by John Hattie
- *The Skillful Teacher* by Stephen Brookfield
- *What the Best College Teachers do* by Ken Bain
- *Most Likely to Succeed* by Tony Wagner
- *On Course* textbook by Skip Downing
- *Small Teaching* by James Lang
- *Teach Students How to Learn* by Sandra Yancy McGuire
- *Pedagogy of the Oppressed* by Paulo Friere
- *To My Professor* by Michigan State University
- *The Courage to Teach* by Parker Palmer
- *Culturally Responsive Teaching and the Brain* by Zaretta Hammond
- *Fostering The Habits of Mind in Today's Students* by Jennifer Fletcher et al.

Thank you!

