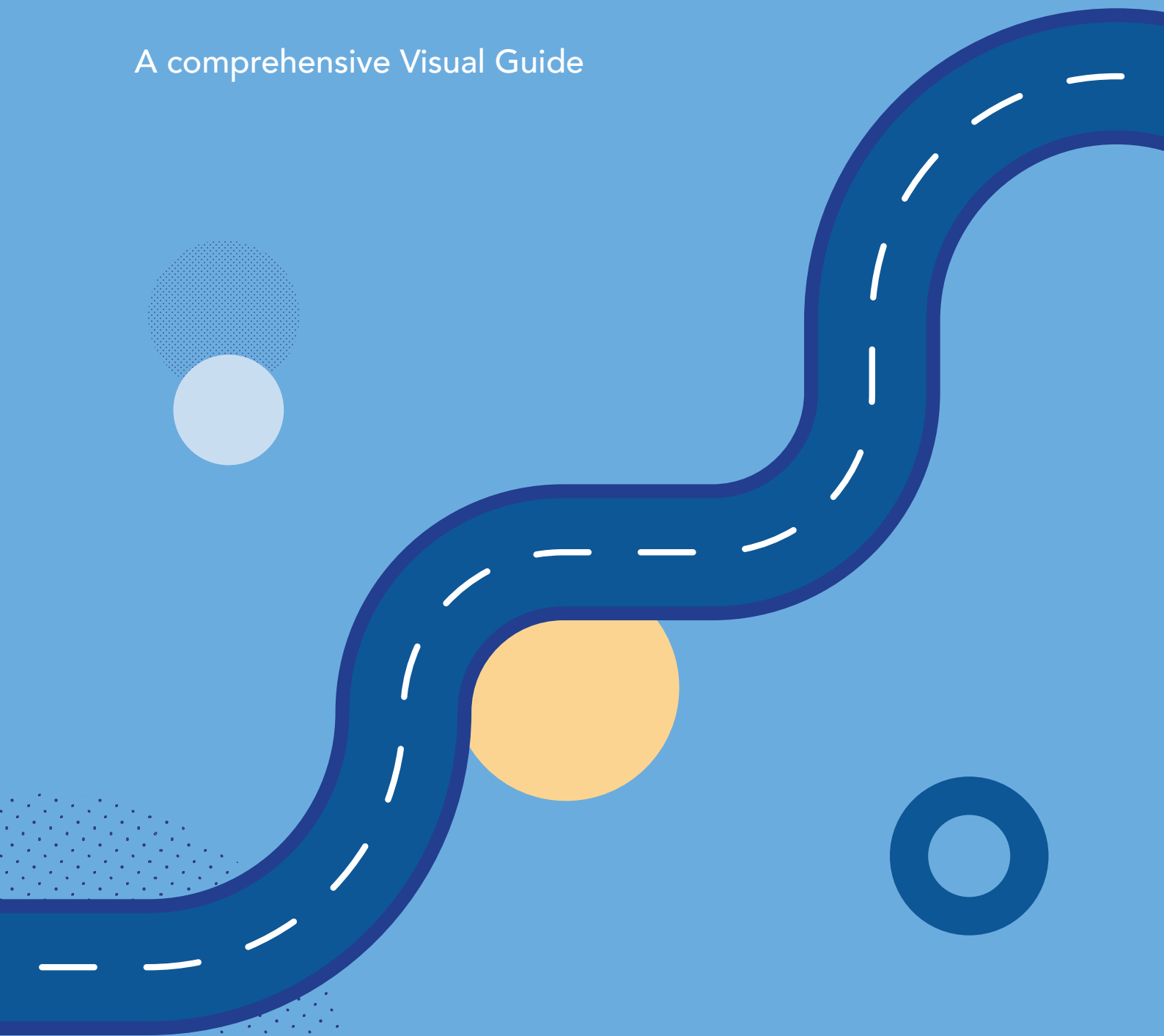


# HOW TO COMPLETE YOUR ENGLISH SELF-PLACEMENT

A comprehensive Visual Guide



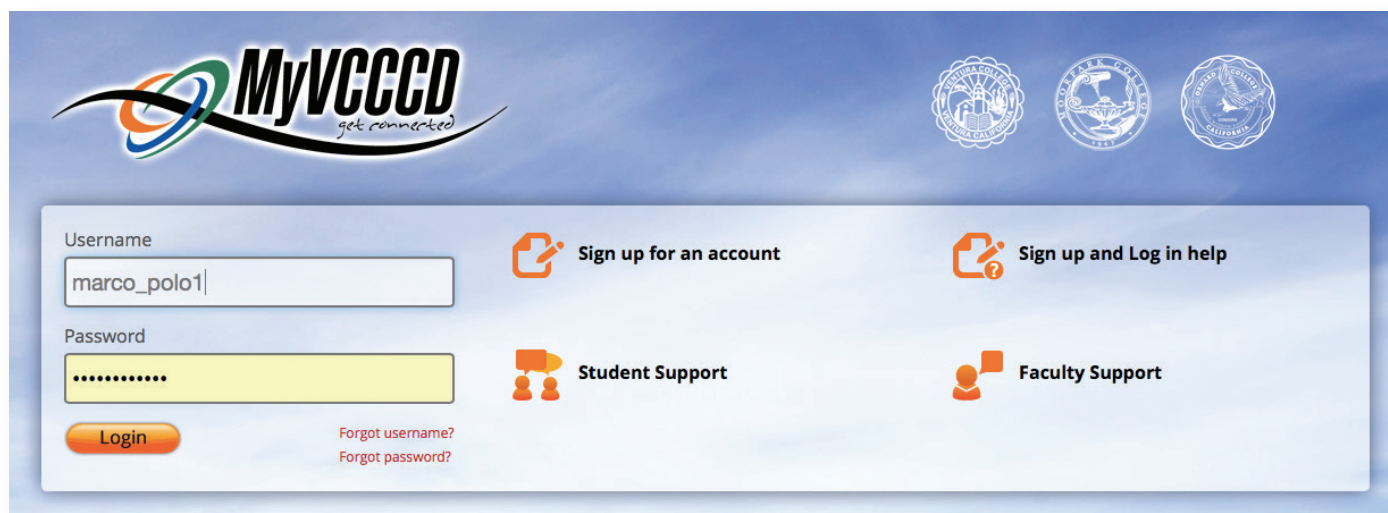
# HOW TO COMPLETE YOUR ENGLISH SELF-PLACEMENT

## A comprehensive Visual Guide

1

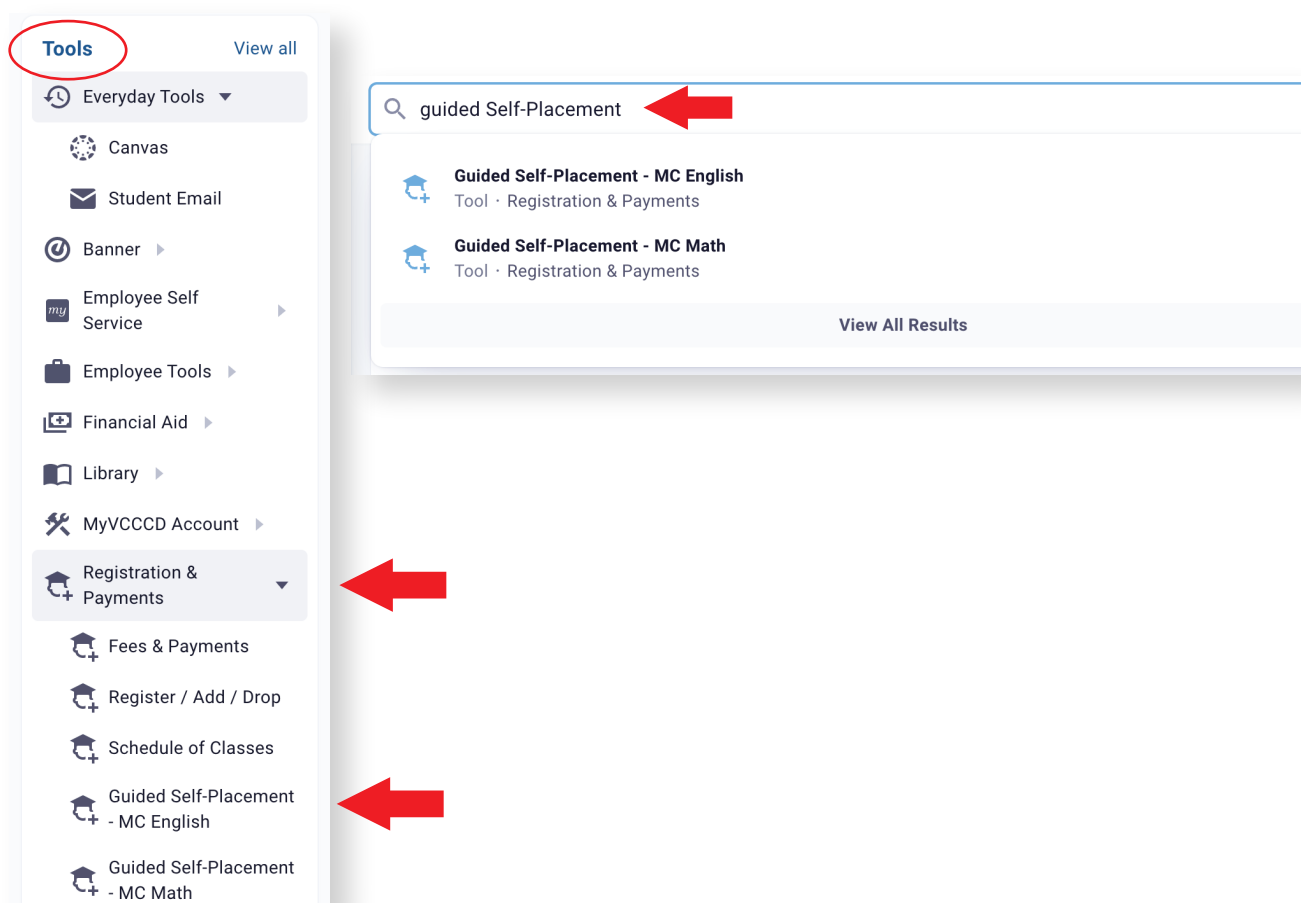
### Log into your MyVcccd account

- Go to [www.my.vcccd.edu](http://www.my.vcccd.edu)
- Log in with your username and password



2

### Click on Tools, then click on Registration & Payments and you will find Guided Self-Placement or search for Guided Self-Placement



# HOW TO COMPLETE YOUR ENGLISH SELF-PLACEMENT

## A comprehensive Visual Guide

3

### Click on English Self-Placement

- Choose the option that best works for you

#### English Self-Placement at Moorpark College

Welcome to the Moorpark College English Department! This guide can help you make an informed decision about which English course to take first.

High school grade point average (GPA) is the best predictor of success in English M01A: English Composition. If your GPA is 2.6 or above, you are very likely to do well in M01A, but you may want more guidance in choosing your first English course if

☐ your GPA is lower than 2.6,

☐ you didn't graduate from high school,

☐ you graduated more than 10 years ago, or

☐ you didn't graduate from an American high school.

**Note:** ESL (English as a Second Language): If your first language is not English and you are seeking courses in ESL, please visit the ESL webpage and read the Self-Placement Guide there: <https://www.moorparkcollege.edu/departments/academic/english-as-a-second-language> You may also contact Professor Daniela Guevara, ESL Coordinator, at [dguevara@vcccd.edu](mailto:dguevara@vcccd.edu).

Next

4

### Complete and Click “Next” to continue with your English Self-Placement

#### English Self-Placement at Moorpark College

**GPA**

If your high school GPA is

- 2.6 or above**, you are likely to succeed in English M01A.
- 1.9 - 2.6**, you are still likely to succeed in M01A but we suggest that you enroll in a section of M01A linked with a free one-hour/week support course (English M91AS) or work regularly with a tutor in the Writing Center.
- below 1.9**, you may still enroll in M01A but we strongly recommend that you enroll in a linked M01A/M91AS class or work regularly with a tutor in the Writing Center.

**Beyond GPA**

Besides GPA, other factors contribute to your success in English. If you can say “yes” to most of these statements, you will be well prepared for M01A. If you're not so confident, we recommend that you supplement M01A with either M91AS or regular tutoring.

“I’m confident in my reading and writing skills.”

☐ I enjoy reading books, magazines, or online articles.

☐ I have done well in previous English classes.

☐ I can focus on a main idea and organize a logical argument.

☐ I can edit and proofread my writing to eliminate grammatical errors.

☐ I know how to use computers for writing and research.

“I’m confident in my study habits and personal situation.”

☐ I know that a four-unit class (like English M01A) expects 4 hours in class plus 8-12 hours of homework weekly.

☐ I am motivated and persistent in my education.


☐ I manage my time and meet deadlines.

☐ I balance work, social, and academic commitments.

☐ I have reliable transportation to campus and/or reliable Wifi and Internet access.

☐ I am aware that Moorpark College offers student services to assist with education: tutoring, academic counseling, physical and mental health services, financial aid, veterans' assistance, and more.

Next



# HOW TO COMPLETE YOUR ENGLISH SELF-PLACEMENT

## A comprehensive Visual Guide

5

### Select appropriate English class for you

- This does not automatically enroll you in the course

#### English Self-Placement at Moorpark College

##### Choose Your First English Course

Based on your statements about your GPA, study habits, and personal situation, we recommend the following as your first English course, but you may use the drop-down menu to select any of the four options explained below.

English M01A + English M91AS

6

### Review english Self-Placement guide and submit

#### English Self-Placement at Moorpark College

##### Choose Your First English Course

Based on your statements about your GPA, study habits, and personal situation, we recommend the following as your first English course, but you may use the drop-down menu to select any of the four options explained below.

English M01A

**English M01A (English Composition, 4 units):** This course is transferable to UC, CSU, and other four-year universities. It assumes that you can write clearly and correctly. It includes instruction in:

- Reading and analyzing college-level texts
- Composing an essay with a clear controlling idea (thesis) and logical organization of ideas
- Developing an argument using a variety of writing strategies such as compare and contrast, cause and effect, etc.
- Composing a research paper of 7-10 pages using and documenting outside sources
- Revising, editing, and proofreading your writing

**English M01A + tutoring:** If your high school GPA is lower than 2.6 or you feel unsure of your abilities, you may enroll in English M01A but we recommend that you supplement the classwork by meeting regularly with a tutor in the Writing Center. Tutoring appointments are free: make them through the Writing Center website, or drop by the Writing Center on the third floor of the LLR (Library) to meet the tutors and schedule an appointment.

**English M01A + English M91AS (enroll in both courses):** If your high school GPA is lower than 2.6 or you feel unsure of your readiness, you may enroll in English M01A but we recommend that you choose one of the sections linked to English M91AS. M91AS is a free, noncredit course that gives you an hour per week of extra support from the instructor and a tutor. You must enroll in both M01A and M91AS. Instruction in M91AS includes:

- Strategies for understanding and analyzing college-level readings
- The steps of the writing process: prewriting/brainstorming, drafting, revising, editing, proofreading of M01A class assignments
- Study skills, growth mindset, positive habits of mind
- Strategies for timed in-class writing and exams.

Once you have decided on your first English class, go to the [Schedule of Classes](#) to find a section that fits your schedule. Remember to pay your fees right away so that you are not dropped from the class.

Please click submit to save your course selection.

Submit

# HOW TO COMPLETE YOUR ENGLISH SELF-PLACEMENT

A comprehensive Visual Guide

## NEED FURTHER ASSISTANCE?

For more in depth assistance, please contact

**Welcome Center**

☎ (805) 378 1400

✉ [mcstudentservices@vcccd.edu](mailto:mcstudentservices@vcccd.edu)

📍 Fountain Hall

